

For Research Use Only

OLR1/LOX1 Recombinant monoclonal antibody

Catalog Number: 86194-3-RR



Basic Information

Catalog Number: 86194-3-RR	GenBank Accession Number: NM_002543.3	Purification Method: Protein A purification
Size: 100ul , Concentration: 1000 µg/ml by Nanodrop;	GeneID (NCBI): 4973	CloneNo.: 250525A3
Source: Rabbit	UNIPROT ID: P78380-1	Recommended Dilutions: WB: 1:1000-1:4000
Isotype: IgG	Full Name: oxidized low density lipoprotein (lectin-like) receptor 1	
Immunogen Catalog Number: EG2911	Calculated MW: 31 kDa	
	Observed MW: 50-55 kDa	

Applications

Tested Applications: WB, ELISA	Positive Controls: WB : human placenta tissue, bEnd.3 cells
Species Specificity: human, mouse	

Background Information

OLR1/LOX-1 acts as a receptor, in the form of homodimer, that mediates the recognition, internalization, and degradation of oxidatively modified low density lipoprotein (oxLDL) (PMID: 9052782, 15695803). OLR1 is predominantly expressed in endothelial cells and vascular-rich organs such as the placenta, lung, liver, and brain (PMID: 9828121). OLR1 is a protein containing 273 amino acids with a calculated molecular mass of 31 kDa but an apparent molecular mass of 50 kDa, which may result from the glycosylation of four potential N-linked glycosylation sites located at the C-terminal domain (PMID: 9052782).

Storage

Storage:
Store at -20°C. Stable for one year after shipment.
Storage Buffer:
PBS with 0.02% sodium azide and 50% glycerol, pH7.3
Aliquoting is unnecessary for -20°C storage

*** 20ul sizes contain 0.1% BSA

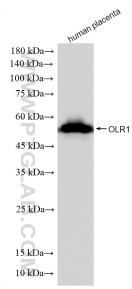
For technical support and original validation data for this product please contact:

T: 1 (888) 4PTGLAB (1-888-478-4522) (toll free in USA), or 1(312) 455-8498 (outside USA)

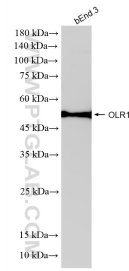
E: proteintech@ptglab.com
W: ptglab.com

This product is exclusively available under Proteintech Group brand and is not available to purchase from any other manufacturer.

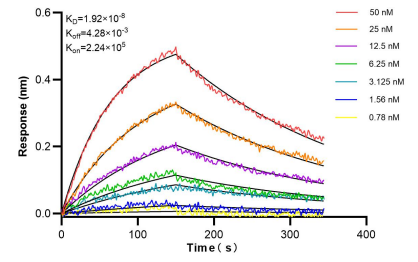
Selected Validation Data



Human placenta tissue was subjected to SDS PAGE followed by western blot with 86194-3-RR (OLR1 antibody) at dilution of 1:2000 incubated at room temperature for 1.5 hours.



bEnd.3 cells were subjected to SDS PAGE followed by western blot with 86194-3-RR (OLR1 antibody) at dilution of 1:2000 incubated at room temperature for 1.5 hours.



Bi-layer interferometry (BLI) kinetic assays of 86194-3-RR against Human OLR1/LOX1 were performed. The affinity constant is 1.92 nM.