

For Research Use Only

SCPX Recombinant antibody, PBS Only (Detector)

Catalog Number: 86196-1-PBS



Basic Information

Catalog Number: 86196-1-PBS	GenBank Accession Number: BC067108	Purification Method: Protein A purification
Size: 100ug , Concentration: 1 mg/ml by Nanodrop;	GeneID (NCBI): 6342	CloneNo.: 250813B3
Source: Rabbit	UNIPROT ID: P22307	
Isotype: IgG	Full Name: sterol carrier protein 2	
Immunogen Catalog Number: AG5895	Calculated MW: 59 kDa	

Applications

Tested Applications:
Cytometric bead array, Indirect ELISA, Sample test

Species Specificity:
human

Product Information

86196-1-PBS targets SCPX as part of a matched antibody pair:

MP02291-1: 86196-2-PBS capture and 86196-1-PBS detection (validated in Cytometric bead array)

Unconjugated rabbit recombinant monoclonal antibody in PBS only (BSA and azide free) storage buffer at a concentration of 1 mg/mL, ready for conjugation. Created using Proteintech's proprietary in-house recombinant technology. Recombinant production enables unrivalled batch-to-batch consistency, easy scale-up, and future security of supply.

This conjugation ready format makes antibodies ideal for use in many applications including: ELISAs, multiplex assays requiring matched pairs, mass cytometry, and multiplex imaging applications. Antibody use should be optimized by the end user for each application and assay.

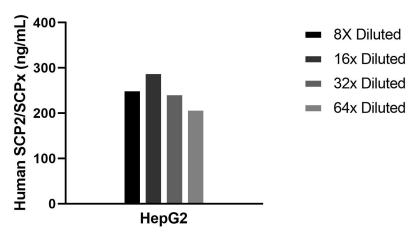
Storage

Storage:
Store at -80°C.
Storage Buffer:
PBS only, pH7.3

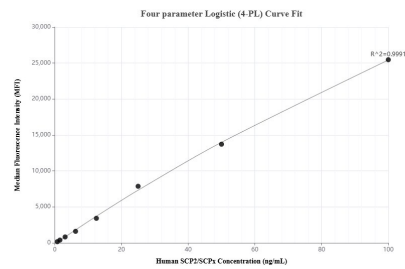
For technical support and original validation data for this product please contact:
T: 1 (888) 4PTGLAB (1-888-478-4522) (toll free in USA), or 1(312) 455-8498 (outside USA)
E: proteintech@ptglab.com
W: ptglab.com

This product is exclusively available under Proteintech Group brand and is not available to purchase from any other manufacturer.

Selected Validation Data



The mean SCP2/SCPx concentration was determined to be 249.0 ng/mL in HepG2 cell extract based on a 0.9 mg/mL extract load.



Cytometric bead array standard curve of MP02291-1, SCP2/SCPx Recombinant Matched Antibody Pair, PBS Only. Capture antibody: 86196-2-PBS. Detection antibody: 86196-1-PBS. Standard: Ag5895. Range: 0.781-100 ng/mL.