

For Research Use Only

SCPX Recombinant antibody

Catalog Number: 86196-1-RR



Basic Information

Catalog Number: 86196-1-RR	GenBank Accession Number: BC067108	Purification Method: Protein A purification
Size: 100ul , Concentration: 1000 µg/ml by Nanodrop;	GeneID (NCBI): 6342	CloneNo.: 250813B3
Source: Rabbit	UNIPROT ID: P22307	Recommended Dilutions: WB: 1:5000-1:50000 IF/ICC: 1:250-1:1000
Isotype: IgG	Full Name: sterol carrier protein 2	
Immunogen Catalog Number: AG5895	Calculated MW: 59 kDa	
	Observed MW: 46 kDa, 58 kDa	

Applications

Tested Applications: WB, IF/ICC, ELISA	Positive Controls:
Species Specificity: human, mouse, rat	WB : rat liver tissue, HepG2 cells, K-562 cells, NIH/3T3 cells, rat brain tissue, U-87 MG cells IF/ICC : HEK-293 cells,

Background Information

SCPX protein is a kind of protein related to cholesterol absorption and transport, belonging to SCP-2 gene family. SCPX protein contains an N-terminal thiolase domain and a C-terminal SCP-2 domain. In cells, SCPX protein will be cut into 44-46 kDa thiolase and 13-15 kDa SCP-2 protein. SCPX-2 is a nonspecific lipid transporter, which is involved in the transport and metabolism of intracellular lipids. It is distributed in peroxisome, cytoplasm and nucleus, and may play a role as a transcription factor in nucleus.

Storage

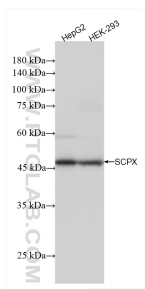
Storage:
Store at -20°C. Stable for one year after shipment.
Storage Buffer:
PBS with 0.02% sodium azide and 50% glycerol, pH7.3
Aliquoting is unnecessary for -20°C storage

*** 20ul sizes contain 0.1% BSA

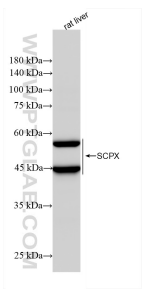
For technical support and original validation data for this product please contact:
T: 1 (888) 4PTGLAB (1-888-478-4522) (toll free in USA), or 1(312) 455-8498 (outside USA)
E: proteintech@ptglab.com
W: ptglab.com

This product is exclusively available under Proteintech Group brand and is not available to purchase from any other manufacturer.

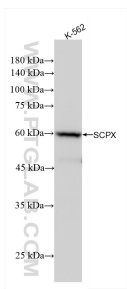
Selected Validation Data



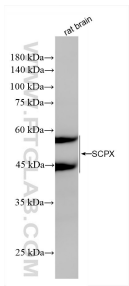
Various lysates were subjected to SDS PAGE followed by western blot with 86196-1-RR (SCPX antibody) at dilution of 1:10000 incubated at room temperature for 1.5 hours.



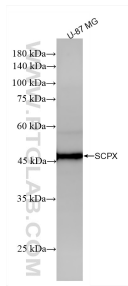
rat liver tissue were subjected to SDS PAGE followed by western blot with 86196-1-RR (SCPX antibody) at dilution of 1:10000 incubated at room temperature for 1.5 hours.



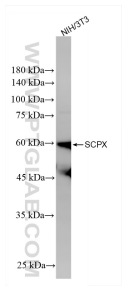
K-562 cells were subjected to SDS PAGE followed by western blot with 86196-1-RR (SCPX antibody) at dilution of 1:10000 incubated at room temperature for 1.5 hours.



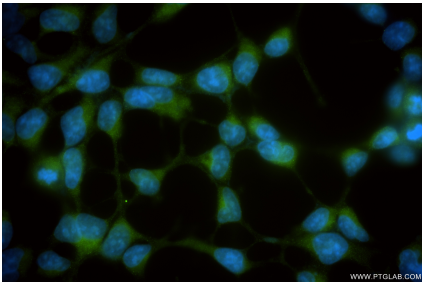
rat brain tissue were subjected to SDS PAGE followed by western blot with 86196-1-RR (SCPX antibody) at dilution of 1:10000 incubated at room temperature for 1.5 hours.



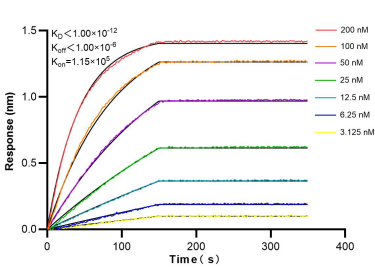
U-87 MG cells were subjected to SDS PAGE followed by western blot with 86196-1-RR (SCPX antibody) at dilution of 1:10000 incubated at room temperature for 1.5 hours.



NIH/3T3 cells were subjected to SDS PAGE followed by western blot with 86196-1-RR (SCPX antibody) at dilution of 1:10000 incubated at room temperature for 1.5 hours.



Immunofluorescent analysis of (-20°C Ethanol) fixed HEK-293 cells using SCPX antibody (86196-1-RR, Clone: 250813B3) at dilution of 1:500 and CoraLite®488-Conjugated Goat Anti-Rabbit IgG(H+L) (SA00013-2).



Biolayer interferometry (BLI) kinetic assays of 86196-1-RR against Human SCPX were performed. The affinity constant is below 1 pM.