

For Research Use Only

# SCP2/SCPx Recombinant antibody, PBS Only

Catalog Number: 86196-3-PBS



## Basic Information

### Catalog Number:

86196-3-PBS

### Size:

100ug, Concentration: 1 mg/ml by Nanodrop;

### Source:

Rabbit

### Isotype:

IgG

### Immunogen Catalog Number:

AG5895

### GenBank Accession Number:

BC067108

### GeneID (NCBI):

6342

### UNIPROT ID:

P22307

### Full Name:

sterol carrier protein 2

### Calculated MW:

59 kDa

### Observed MW:

46 kDa, 58 kDa

### Purification Method:

Protein A purification

### CloneNo.:

250813C8

## Applications

### Tested Applications:

WB, IF/ICC, Indirect ELISA

### Species Specificity:

human, mouse, rat

## Background Information

SCP2 (Sterol carrier protein-2), also called nonspecific lipid-transfer protein, is thought to play a major role in intracellular lipid transport and metabolism. Mutations of SCP2 have been associated with diseases involving abnormalities in lipid trafficking, such as Zellweger syndrome. The alternative splicing generates 58 kDa SCPx and 13-15 kDa SCP2 proteins, both of which contain a C-terminal SCP2 domain. In addition to the SCP2 domain, SCPx also contains an amino-terminal thiolase domain. The proteolytic cleavage of SCPx occurred when it was imported into peroxisomes, giving rise to a 44-46 kDa thiolase and a 13-15 kDa SCP2. It recognizes the intact 58 kDa SCPx protein as well as 44-46 kDa thiolase (PMID: 35996156).

## Storage

### Storage:

Store at -80°C.

### Storage Buffer:

PBS only, pH7.3

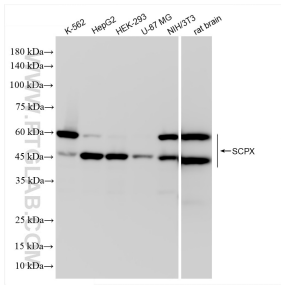
For technical support and original validation data for this product please contact:

T: 1 (888) 4PTGLAB (1-888-478-4522) (toll free in USA), or 1(312) 455-8498 (outside USA)

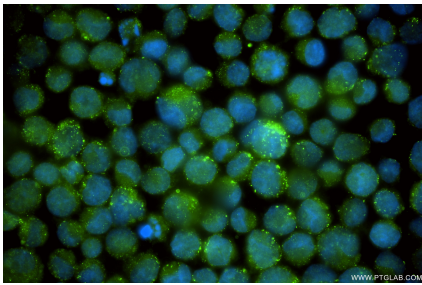
E: [proteintech@ptglab.com](mailto:proteintech@ptglab.com)  
W: [ptglab.com](http://ptglab.com)

This product is exclusively available under Proteintech Group brand and is not available to purchase from any other manufacturer.

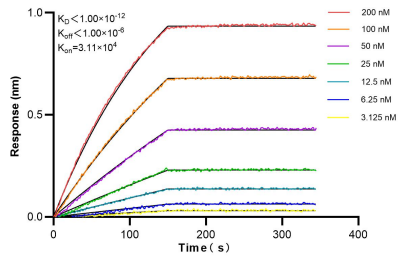
## Selected Validation Data



Various lysates were subjected to SDS PAGE followed by western blot with 86196-3-RR (SCPX antibody) at dilution of 1:5000 incubated at room temperature for 1.5 hours. This data was developed using the same antibody clone with 86196-3-PBS in a different storage buffer formulation.



Immunofluorescent analysis of (-20°C Ethanol) fixed k562 using SCP2/SCPx antibody (86196-3-RR, Clone: 250813C8 ) at dilution of 1:400 and CoraLite® 488-Conjugated Goat Anti-Rabbit IgG(H+L) (SA00013-2). This data was developed using the same antibody clone with 86196-3-PBS in a different storage buffer formulation.



Biolayer interferometry (BLI) kinetic assays of 86196-3-RR against Human SCP2/SCPx were performed. The affinity constant is below 1 pM.