

For Research Use Only

# SCP2/SCPx Recombinant antibody

Catalog Number: 86196-3-RR



## Basic Information

<b>Catalog Number:</b> 86196-3-RR	<b>GenBank Accession Number:</b> BC067108	<b>Purification Method:</b> Protein A purification
<b>Size:</b> 100ul , Concentration: 1000 µg/ml by Nanodrop;	<b>GeneID (NCBI):</b> 6342	<b>CloneNo.:</b> 250813C8
<b>Source:</b> Rabbit	<b>UNIPROT ID:</b> P22307	<b>Recommended Dilutions:</b> WB: 1:2000-1:10000 IF/ICC: 1:200-1:800
<b>Isotype:</b> IgG	<b>Full Name:</b> sterol carrier protein 2	
<b>Immunogen Catalog Number:</b> AG5895	<b>Calculated MW:</b> 59 kDa	
	<b>Observed MW:</b> 46 kDa, 58 kDa	

## Applications

<b>Tested Applications:</b> WB, IF/ICC, ELISA	<b>Positive Controls:</b>
<b>Species Specificity:</b> human, mouse, rat	<b>WB :</b> K-562 cells, HepG2 cells, HEK-293 cells, U-87 MG cells, NIH/3T3 cells, rat brain tissue
	<b>IF/ICC :</b> k562,

## Background Information

SCP2 (Sterol carrier protein-2), also called nonspecific lipid-transfer protein, is thought to play a major role in intracellular lipid transport and metabolism. Mutations of SCP2 have been associated with diseases involving abnormalities in lipid trafficking, such as Zellweger syndrome. The alternative splicing generates 58 kDa SCPx and 13-15 kDa SCP2 proteins, both of which contain a C-terminal SCP2 domain. In addition to the SCP2 domain, SCPx also contains an amino-terminal thiolase domain. The proteolytic cleavage of SCPx occurred when it was imported into peroxisomes, giving rise to a 44-46 kDa thiolase and a 13-15 kDa SCP2. It recognizes the intact 58 kDa SCPx protein as well as 44-46 kDa thiolase (PMID: 35996156).

## Storage

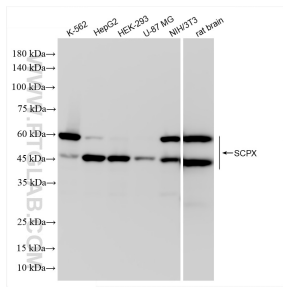
**Storage:**  
Store at -20°C. Stable for one year after shipment.  
**Storage Buffer:**  
PBS with 0.02% sodium azide and 50% glycerol, pH7.3  
**Aliquoting is unnecessary for -20°C storage**

\*\*\* 20ul sizes contain 0.1% BSA

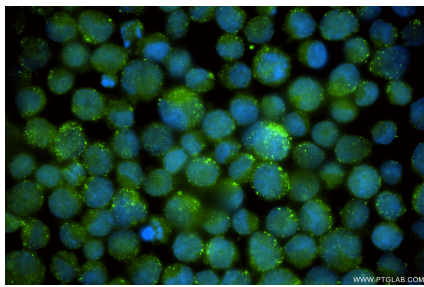
For technical support and original validation data for this product please contact:  
T: 1 (888) 4PTGLAB (1-888-478-4522) (toll free in USA), or 1(312) 455-8498 (outside USA)  
E: [proteintech@ptglab.com](mailto:proteintech@ptglab.com)  
W: [ptglab.com](http://ptglab.com)

This product is exclusively available under Proteintech Group brand and is not available to purchase from any other manufacturer.

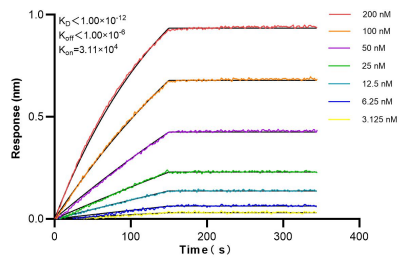
## Selected Validation Data



Various lysates were subjected to SDS PAGE followed by western blot with 86196-3-RR (SCPX antibody) at dilution of 1:5000 incubated at room temperature for 1.5 hours.



Immunofluorescent analysis of (-20°C Ethanol) fixed k562 using SCP2/SCPx antibody (86196-3-RR, Clone: 250813C8 ) at dilution of 1:400 and CoraLite® 488-Conjugated Goat Anti-Rabbit IgG(H+L) (SA00013-2).



Biolayer interferometry (BLI) kinetic assays of 86196-3-RR against Human SCP2/SCPx were performed. The affinity constant is below 1 pM.