

For Research Use Only

# POLD1 Recombinant antibody, PBS Only (Detector)

Catalog Number: 86197-3-PBS



## Basic Information

<b>Catalog Number:</b> 86197-3-PBS	<b>GenBank Accession Number:</b> BC008800	<b>Purification Method:</b> Protein A purification
<b>Size:</b> 100ug , Concentration: 1 mg/ml by Nanodrop;	<b>GeneID (NCBI):</b> 5424	<b>CloneNo.:</b> 250828F9
<b>Source:</b> Rabbit	<b>UNIPROT ID:</b> P28340	
<b>Isotype:</b> IgG	<b>Full Name:</b> polymerase (DNA directed), delta 1, catalytic subunit 125kDa	
<b>Immunogen Catalog Number:</b> AG8178	<b>Calculated MW:</b> 1107 aa, 124 kDa	

## Applications

**Tested Applications:**  
Sandwich ELISA, Indirect ELISA, Sample test

**Species Specificity:**  
human

## Product Information

86197-3-PBS targets POLD1 as part of a matched antibody pair:

MP02450-1: 86197-4-PBS capture and 86197-3-PBS detection (validated in Sandwich ELISA)

Unconjugated rabbit recombinant monoclonal antibody in PBS only (BSA and azide free) storage buffer at a concentration of 1 mg/mL, ready for conjugation. Created using Proteintech's proprietary in-house recombinant technology. Recombinant production enables unrivalled batch-to-batch consistency, easy scale-up, and future security of supply.

This conjugation ready format makes antibodies ideal for use in many applications including: ELISAs, multiplex assays requiring matched pairs, mass cytometry, and multiplex imaging applications. Antibody use should be optimized by the end user for each application and assay.

## Storage

**Storage:**  
Store at -80°C.  
**Storage Buffer:**  
PBS only, pH7.3

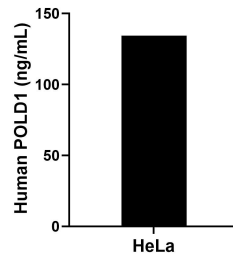
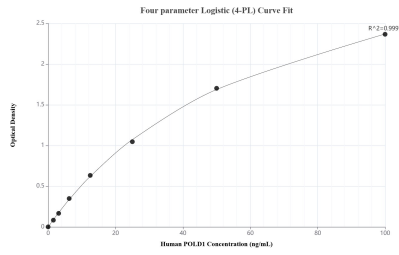
For technical support and original validation data for this product please contact:

T: 1 (888) 4PTGLAB (1-888-478-4522) (toll free  
in USA), or 1(312) 455-8498 (outside USA)

E: [proteintech@ptglab.com](mailto:proteintech@ptglab.com)  
W: [ptglab.com](http://ptglab.com)

**This product is exclusively available under Proteintech Group brand and is not available to purchase from any other manufacturer.**

## Selected Validation Data



Sandwich ELISA standard curve of MP02450-1, Human POLD1 Recombinant Matched Antibody Pair - PBS only. 86197-4-PBS was coated to a plate as the capture antibody and incubated with serial dilutions of standard Ag8178. 86197-3-PBS was HRP conjugated as the detection antibody. Range: 1.56-100 ng/mL

The mean POLD1 concentration was determined to be 134.28 ng/mL in HeLa cell extract based on a 1.20 mg/mL extract load.