

For Research Use Only

PSMD12 Recombinant antibody

Catalog Number: 86200-3-RR



Basic Information

Catalog Number:

86200-3-RR

Size:

100ul, Concentration: 1000 µg/ml by Nanodrop;

Source:

Rabbit

Isotype:

IgG

Immunogen Catalog Number:

AG1957

GenBank Accession Number:

BC019062

GeneID (NCBI):

5718

UNIPROT ID:

O00232

Full Name:

proteasome (prosome, macropain)
26S subunit, non-ATPase, 12

Calculated MW:

456 aa, 53 kDa

Observed MW:

50-55 kDa

Purification Method:

Protein A purification

CloneNo.:

250848B1

Recommended Dilutions:

WB: 1:5000-1:50000

Applications

Tested Applications:

WB, ELISA

Species Specificity:

human, mouse, rat

Positive Controls:

WB : HeLa cells, MCF-7 cells, HT-29 cells, HepG2 cells,
mouse heart tissue, mouse lung tissue, rat lung tissue

Background Information

Proteasome 26S subunit, non-ATPase 12 (PSMD12; also known as RPN5) was first discovered in fission yeast. It is a non-ATPase subunit of the 19S regulator of the 26S proteasome complex, which is involved in regulating the cell cycle, repairing DNA damage, and regulating apoptosis by mediating the internal protein balance through the removal of misfolded proteins or damaged intracellular substructures. In addition, PSMD12 contributes to tumor cell growth and apoptosis in breast cancer. (PMID: 33987398)

Storage

Storage:

Store at -20°C. Stable for one year after shipment.

Storage Buffer:

PBS with 0.02% sodium azide and 50% glycerol, pH7.3

Aliquoting is unnecessary for -20°C storage

*** 20ul sizes contain 0.1% BSA

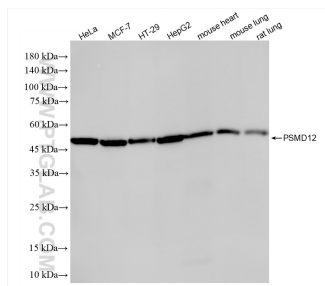
For technical support and original validation data for this product please contact:

T: 1 (888) 4PTGLAB (1-888-478-4522) (toll free
in USA), or 1(312) 455-8498 (outside USA)

E: proteintech@ptglab.com
W: ptglab.com

This product is exclusively available under Proteintech Group brand and is not available to purchase from any other manufacturer.

Selected Validation Data



Various lysates were subjected to SDS PAGE followed by western blot with 86200-3-RR (PSMD12 antibody) at dilution of 1:10000 incubated at room temperature for 1.5 hours.