

For Research Use Only

# RPL13 Recombinant antibody

Catalog Number: 86205-1-RR



## Basic Information

Catalog Number:

86205-1-RR

Size:

100ul, Concentration: 1000 µg/ml by  
Nanodrop;

Source:

Rabbit

Isotype:

IgG

Immunogen Catalog Number:

AG1814

GenBank Accession Number:

BC014167

GeneID (NCBI):

6137

UNIPROT ID:

P26373

Full Name:

ribosomal protein L13

Calculated MW:

24 kDa

Observed MW:

24 kDa

Purification Method:

Protein A purification

CloneNo.:

250752B10

Recommended Dilutions:

WB: 1:2000-1:10000

## Applications

Tested Applications:

WB, ELISA

Species Specificity:

human

Positive Controls:

WB : HeLa cells, Jurkat cells, K-562 cells, MCF-7 cells,  
SGC-7091 cells

## Background Information

The mammalian ribosome comprises 79 ribosomal proteins and four rRNAs, which combine in equimolar ratios to form the small (40S) and large (60S) subunits. Ribosome proteins are a direct and critical target of the PI3K pathway in promoting growth.[PMID:15289434]. RPL13 may be a plausible candidate tumor suppressor gene, as knocking down L13 expression using small interfering RNA (siRNA) resulted in drastic attenuation of cancer cell growth with significant G1 and G2/M arrest of the cell cycle[PMID:16786168].

## Storage

Storage:

Store at -20°C. Stable for one year after shipment.

Storage Buffer:

PBS with 0.02% sodium azide and 50% glycerol, pH7.3

Aliquoting is unnecessary for -20°C storage

\*\*\* 20ul sizes contain 0.1% BSA

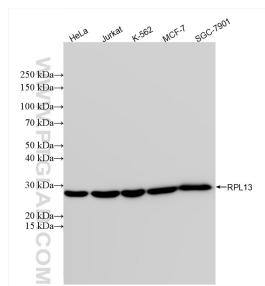
For technical support and original validation data for this product please contact:

T: 1 (888) 4PTGLAB (1-888-478-4522) (toll free  
in USA), or 1(312) 455-8498 (outside USA)

E: proteintech@ptglab.com  
W: ptglab.com

This product is exclusively available under Proteintech Group brand and is not available to purchase from any other manufacturer.

## Selected Validation Data



Various lysates were subjected to SDS PAGE followed by western blot with 86205-1-RR (RPL13 antibody) at dilution of 1:5000 incubated at room temperature for 1.5 hours.