

RPL13 Recombinant antibody

Catalog Number: 86205-2-RR

Basic Information

Catalog Number: 86205-2-RR	GenBank Accession Number: BC014167	Purification Method: Protein A purification
Size: 100ul , Concentration: 1000 µg/ml by Nanodrop;	GeneID (NCBI): 6137	CloneNo.: 250752D2
Source: Rabbit	UNIPROT ID: P26373	Recommended Dilutions: WB: 1:2000-1:10000 IF/ICC: 1:250-1:1000
Isotype: IgG	Full Name: ribosomal protein L13	
Immunogen Catalog Number: AG1814	Calculated MW: 24 kDa	
	Observed MW: 24 kDa	

Applications

Tested Applications: WB, IF/ICC, ELISA	Positive Controls:
Species Specificity: human, mouse, monkey	WB : HeLa cells, Jurkat cells, K-562 cells, MCF-7 cells, COS-7 cells, SGC-7091 cells, NIH/3T3 cells
	IF/ICC : HeLa cells,

Background Information

The mammalian ribosome comprises 79 ribosomal proteins and four rRNAs, which combine in equimolar ratios to form the small (40S) and large (60S) subunits. Ribosome proteins are a direct and critical target of the PI3K pathway in promoting growth.[PMID:15289434]. RPL13 may be a plausible candidate tumor suppressor gene, as knocking down L13 expression using small interfering RNA (siRNA) resulted in drastic attenuation of cancer cell growth with significant G1 and G2/M arrest of the cell cycle[PMID:16786168].

Storage

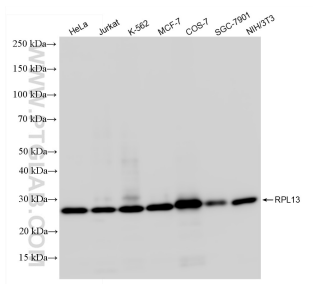
Storage:
Store at -20°C. Stable for one year after shipment.
Storage Buffer:
PBS with 0.02% sodium azide and 50% glycerol, pH7.3
 Aliquoting is unnecessary for -20°C storage

*** 20ul sizes contain 0.1% BSA

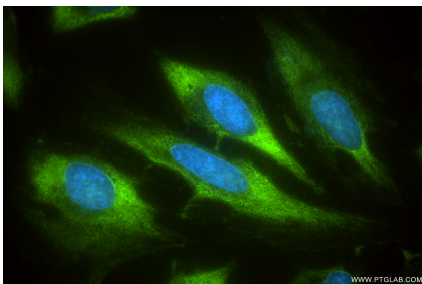
For technical support and original validation data for this product please contact:
 T: 1 (888) 4PTGLAB (1-888-478-4522) (toll free in USA), or 1(312) 455-8498 (outside USA)
 E: proteintech@ptglab.com
 W: ptglab.com

This product is exclusively available under Proteintech Group brand and is not available to purchase from any other manufacturer.

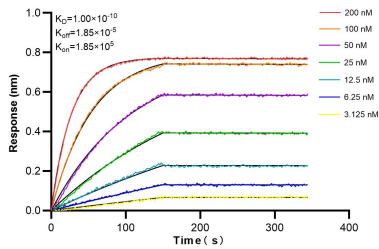
Selected Validation Data



Various lysates were subjected to SDS PAGE followed by western blot with 86205-2-RR (RPL13 antibody) at dilution of 1:5000 incubated at room temperature for 1.5 hours.



Immunofluorescent analysis of (-20°C Ethanol) fixed HeLa cells using RPL13 antibody (86205-2-RR, Clone: 250752D2) at dilution of 1:500 and CoraLite® 488-Conjugated Goat Anti-Rabbit IgG(H+L) (SA00013-2).



Biolayer interferometry (BLI) kinetic assays of 86205-2-RR against Human RPL13 were performed. The affinity constant is 0.10 nM.