

For Research Use Only

# NPRC/NPR3 Recombinant antibody

Catalog Number: 86206-1-RR



## Basic Information

<b>Catalog Number:</b> 86206-1-RR	<b>GenBank Accession Number:</b> NM_001204375.2	<b>Purification Method:</b> Protein A purification
<b>Size:</b> 100ul , Concentration: 1000 µg/ml by Nanodrop;	<b>GeneID (NCBI):</b> 4883	<b>CloneNo.:</b> 250746C4
<b>Source:</b> Rabbit	<b>UNIPROT ID:</b> P17342-1	<b>Recommended Dilutions:</b> WB: 1:1000-1:4000
<b>Isotype:</b> IgG	<b>Full Name:</b> natriuretic peptide receptor C/guanylate cyclase C (atrionatriuretic peptide receptor C)	
<b>Immunogen Catalog Number:</b> EG2988	<b>Calculated MW:</b> 60 kDa	
	<b>Observed MW:</b> 60-70 kDa	

## Applications

<b>Tested Applications:</b> WB, ELISA	<b>Positive Controls:</b> WB : HeLa cells,
<b>Species Specificity:</b> human	

## Background Information

Natriuretic peptide receptor C/guanylate cyclase C (atrionatriuretic peptide receptor C), also known as NPR3, is an atrial natriuretic peptide receptor. The family of natriuretic peptides elicit a number of vascular, renal, and endocrine effects that are important in the maintenance of blood pressure and extracellular fluid volume. NPR3 has 3 isoforms with MWs of 37-60 kDa produced by alternative splicing.

## Storage

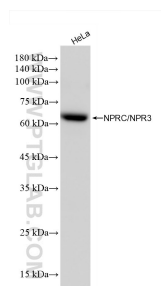
**Storage:**  
Store at -20°C. Stable for one year after shipment.  
**Storage Buffer:**  
PBS with 0.02% sodium azide and 50% glycerol, pH7.3  
**Aliquoting is unnecessary for -20°C storage**

\*\*\* 20ul sizes contain 0.1% BSA

For technical support and original validation data for this product please contact:  
T: 1 (888) 4PTGLAB (1-888-478-4522) (toll free in USA), or 1(312) 455-8498 (outside USA)  
E: [proteintech@ptglab.com](mailto:proteintech@ptglab.com)  
W: [ptglab.com](http://ptglab.com)

This product is exclusively available under Proteintech Group brand and is not available to purchase from any other manufacturer.

## Selected Validation Data



HeLa cells were subjected to SDS PAGE followed by western blot with 86206-1-RR (NPRC/NPR3 antibody) at dilution of 1:2000 incubated at room temperature for 1.5 hours.