

For Research Use Only

PGM2L1 Recombinant antibody, PBS Only

Catalog Number: 86209-1-PBS



Basic Information

Catalog Number: 86209-1-PBS	GenBank Accession Number: BC059360	Purification Method: Protein A purification
Size: 100ug , Concentration: 1 mg/ml by Nanodrop;	GeneID (NCBI): 283209	CloneNo.: 250849G1
Source: Rabbit	UNIPROT ID: Q6PCE3	
Isotype: IgG	Full Name: phosphoglucomutase 2-like 1	
Immunogen Catalog Number: AG5019	Calculated MW: 70 kDa	
	Observed MW: 70 kDa	

Applications

Tested Applications:
WB, Indirect ELISA

Species Specificity:
human, mouse, rat

Background Information

PGM2L1 (Phosphoglucomutase 2 Like 1) is an enzyme-like protein involved in carbohydrate metabolism. PGM2L1 catalyzes the formation of G16BP by using the glycolytic intermediate 1,3-bisphosphoglycerate as a phosphate donor and glucose-1-phosphate or glucose-6-phosphate as a phosphate acceptor. PGM2L1 plays a crucial role in glycogen metabolism, glycolysis, and gluconeogenesis as a key enzyme, and increasing evidence links its function to cancer metabolism and progression. While PGM2 has a wide tissue distribution, PGM2L1 is highly expressed in the brain, accounting for the elevated concentrations of glucose-1,6-bisphosphate found there (PMID: 33979636, PMID: 40027181).

Storage

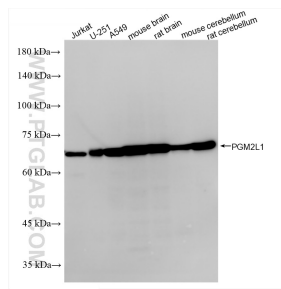
Storage:
Store at -80°C.

Storage Buffer:
PBS only, pH7.3

For technical support and original validation data for this product please contact:
T: 1 (888) 4PTGLAB (1-888-478-4522) (toll free in USA), or 1(312) 455-8498 (outside USA)
E: proteintech@ptglab.com
W: ptglab.com

This product is exclusively available under Proteintech Group brand and is not available to purchase from any other manufacturer.

Selected Validation Data



Various lysates were subjected to SDS PAGE followed by western blot with 86209-1-RR (PGM2L1 antibody) at dilution of 1:3000 incubated at room temperature for 1.5 hours. This data was developed using the same antibody clone with 86209-1-PBS in a different storage buffer formulation.