

For Research Use Only

# PGM2L1 Recombinant antibody

Catalog Number: 86209-1-RR



## Basic Information

<b>Catalog Number:</b> 86209-1-RR	<b>GenBank Accession Number:</b> BC059360	<b>Purification Method:</b> Protein A purification
<b>Size:</b> 100ul , Concentration: 1000 µg/ml by Nanodrop;	<b>GeneID (NCBI):</b> 283209	<b>CloneNo.:</b> 250849G1
<b>Source:</b> Rabbit	<b>UNIPROT ID:</b> Q6PCE3	<b>Recommended Dilutions:</b> WB: 1:1000-1:6000
<b>Isotype:</b> IgG	<b>Full Name:</b> phosphoglucomutase 2-like 1	
<b>Immunogen Catalog Number:</b> AG5019	<b>Calculated MW:</b> 70 kDa	
	<b>Observed MW:</b> 70 kDa	

## Applications

<b>Tested Applications:</b> WB, ELISA	<b>Positive Controls:</b>
<b>Species Specificity:</b> human, mouse, rat	<b>WB :</b> Jurkat cells, U-251 cells, A549 cells, mouse brain tissue, rat brain tissue, mouse cerebellum tissue, rat cerebellum tissue

## Background Information

PGM2L1 (Phosphoglucomutase 2 Like 1) is an enzyme-like protein involved in carbohydrate metabolism. PGM2L1 catalyzes the formation of G16BP by using the glycolytic intermediate 1,3-bisphosphoglycerate as a phosphate donor and glucose-1-phosphate or glucose-6-phosphate as a phosphate acceptor. PGM2L1 plays a crucial role in glycogen metabolism, glycolysis, and gluconeogenesis as a key enzyme, and increasing evidence links its function to cancer metabolism and progression. While PGM2 has a wide tissue distribution, PGM2L1 is highly expressed in the brain, accounting for the elevated concentrations of glucose-1,6-bisphosphate found there (PMID: 33979636, PMID: 40027181).

## Storage

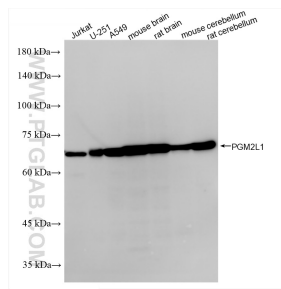
**Storage:**  
Store at -20°C. Stable for one year after shipment.  
**Storage Buffer:**  
PBS with 0.02% sodium azide and 50% glycerol, pH7.3  
**Aliquoting is unnecessary for -20°C storage**

\*\*\* 20ul sizes contain 0.1% BSA

For technical support and original validation data for this product please contact:  
T: 1 (888) 4PTGLAB (1-888-478-4522) (toll free in USA), or 1(312) 455-8498 (outside USA)  
E: [proteintech@ptglab.com](mailto:proteintech@ptglab.com)  
W: [ptglab.com](http://ptglab.com)

This product is exclusively available under Proteintech Group brand and is not available to purchase from any other manufacturer.

## Selected Validation Data



Various lysates were subjected to SDS PAGE followed by western blot with 86209-1-RR (PGM2L1 antibody) at dilution of 1:3000 incubated at room temperature for 1.5 hours.