

For Research Use Only

Rat CD25/IL-2R alpha Recombinant antibody, PBS Only

Catalog Number: 86213-1-PBS



Basic Information

Catalog Number: 86213-1-PBS	GenBank Accession Number: NM_013163.1	Purification Method: Protein A purification
Size: 100ug, Concentration: 1 mg/ml by Nanodrop;	GeneID (NCBI): 25704	CloneNo.: 250670H3
Source: Rabbit	UNIPROT ID: P26897	
Isotype: IgG	Full Name: interleukin 2 receptor, alpha	
Immunogen Catalog Number: EG1453	Calculated MW: 31kDa	
	Observed MW: 55-60 kDa	

Applications

Tested Applications:
WB, Indirect ELISA

Species Specificity:
mouse, rat

Background Information

Proliferation of T lymphocytes is triggered by the interaction of IL-2 with its specific receptor following T lymphocyte activation. The receptor for IL-2 has three forms, generated by different combinations of three different proteins, the alpha chain (IL-2R alpha), the beta chain (IL-2R beta), and the gamma chain (IL-2R gamma) (PMID: 8476561). IL-2R alpha (also known as CD25) is a type I transmembrane protein present on activated T cells, activated B cells, some thymocytes, myeloid precursors, and oligodendrocytes. CD25 is also found on natural CD4+ Foxp3+ Treg cells (PMID: 22585674).

Storage

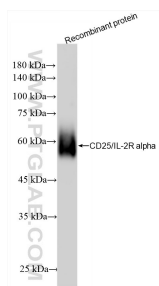
Storage:
Store at -80°C.

Storage Buffer:
PBS only, pH7.3

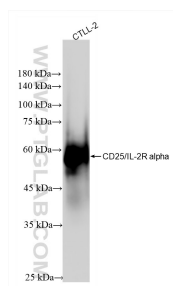
For technical support and original validation data for this product please contact:
T: 1 (888) 4PTGLAB (1-888-478-4522) (toll free in USA), or 1(312) 455-8498 (outside USA)
E: proteintech@ptglab.com
W: ptglab.com

This product is exclusively available under Proteintech Group brand and is not available to purchase from any other manufacturer.

Selected Validation Data



Recombinant protein were subjected to SDS PAGE followed by western blot with 86213-1-RR (CD25/IL-2R alpha antibody) at dilution of 1:5000 incubated at room temperature for 1.5 hours. This data was developed using the same antibody clone with 86213-1-PBS in a different storage buffer formulation.



CTLL-2 cells were subjected to SDS PAGE followed by western blot with 86213-1-RR (CD25/IL-2R alpha antibody) at dilution of 1:5000 incubated at room temperature for 1.5 hours. This data was developed using the same antibody clone with 86213-1-PBS in a different storage buffer formulation.