

For Research Use Only

SCF Recombinant antibody

Catalog Number: 86214-1-RR



Basic Information

Catalog Number: 86214-1-RR	GenBank Accession Number: NM_013598	Purification Method: Protein A purification
Size: 100ul , Concentration: 1000 µg/ml by Nanodrop;	GeneID (NCBI): 17311	CloneNo.: 250022H6
Source: Rabbit	UNIPROT ID: P20826-1	Recommended Dilutions: WB: 1:500-1:2000
Isotype: IgG	Full Name: kit ligand	
Immunogen Catalog Number: EG0402	Calculated MW: 31KD	
	Observed MW: 31 kDa	

Applications

Tested Applications: WB, ELISA	Positive Controls: WB : NIH/3T3 cells, Recombinant protein, PC-12 cells, mouse bone marrow tissue, mouse colon tissue
Species Specificity: mouse, rat	

Background Information

Stem cell factor (SCF) is also named as mast cell growth factor (MGF), Kit ligand (Kitl), c-Kit ligand, steel factor and Kitlg. SCF is a pleiotropic cytokine (also as a dimeric molecule) that mediates regulatory effects on inflammation, tissue remodeling, and fibrosis through binding to and activating its receptor tyrosine kinase c-Kit (PMID: 1698553, PMID: 8630386, PMID: 23073628). SCF is the ligand of c-Kit, a member of the RTKs family. Molecular activity of RTKs is a primary stimulus of cell motility, and expression of the SCF/c-Kit axis is associated with cell migration (PMID: 28629522). SCF is a cytokine that synergizes the effects of Epo during erythropoiesis. Stem cell factor plays a well-described role in regulating the survival, proliferation, migration, and differentiation of hematopoietic progenitors, melanocytes, and germ cells (PMID: 36688460). More recent studies have demonstrated SCF expression in dermal and intestinal epithelial cells, and increased SCF expression has been reported in the inflamed mucosa of individuals with IBD and colonitis (PMID: 18200049, PMID: 30157426).

Storage

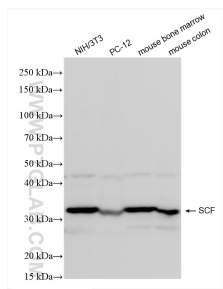
Storage:
Store at -20°C. Stable for one year after shipment.
Storage Buffer:
PBS with 0.02% sodium azide and 50% glycerol, pH7.3
Aliquoting is unnecessary for -20°C storage

*** 20ul sizes contain 0.1% BSA

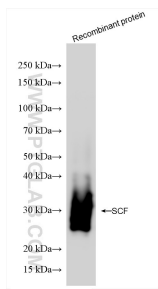
For technical support and original validation data for this product please contact:
T: 1 (888) 4PTGLAB (1-888-478-4522) (toll free in USA), or 1(312) 455-8498 (outside USA)
E: proteintech@ptglab.com
W: ptglab.com

This product is exclusively available under Proteintech Group brand and is not available to purchase from any other manufacturer.

Selected Validation Data



Various lysates were subjected to SDS PAGE followed by western blot with 86214-1-RR (SCF antibody) at dilution of 1:1000 incubated at room temperature for 1.5 hours.



Recombinant protein were subjected to SDS PAGE followed by western blot with 86214-1-RR (SCF antibody) at dilution of 1:1000 incubated at room temperature for 1.5 hours.