

For Research Use Only

STK25 Recombinant antibody, PBS Only (Detector)

Catalog Number: 86216-1-PBS



Basic Information

Catalog Number: 86216-1-PBS	GenBank Accession Number: BC015793	Purification Method: Protein A purification
Size: 100ug, Concentration: 1 mg/ml by Nanodrop;	GeneID (NCBI): 10494	CloneNo.: 250202A6
Source: Rabbit	UNIPROT ID: O00506	
Isotype: IgG	Full Name: serine/threonine kinase 25 (STE20 homolog, yeast)	
Immunogen Catalog Number: AG22964	Calculated MW: 48 kDa	
	Observed MW: 48 kDa	

Applications

Tested Applications:
WB, Sandwich ELISA, Indirect ELISA, Sample test

Species Specificity:
human, mouse, rat

Product Information

86216-1-PBS targets STK25 as part of a matched antibody pair:

MP02398-1: 86216-2-PBS capture and 86216-1-PBS detection (validated in Sandwich ELISA)

Unconjugated rabbit recombinant monoclonal antibody in PBS only (BSA and azide free) storage buffer at a concentration of 1 mg/mL, ready for conjugation. Created using Proteintech's proprietary in-house recombinant technology. Recombinant production enables unrivalled batch-to-batch consistency, easy scale-up, and future security of supply.

This conjugation ready format makes antibodies ideal for use in many applications including: ELISAs, multiplex assays requiring matched pairs, mass cytometry, and multiplex imaging applications. Antibody use should be optimized by the end user for each application and assay.

Storage

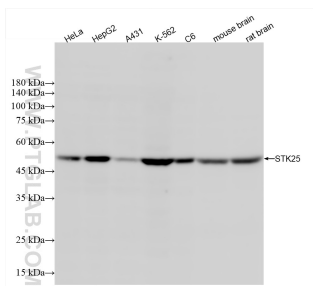
Storage:
Store at -80°C.

Storage Buffer:
PBS only, pH7.3

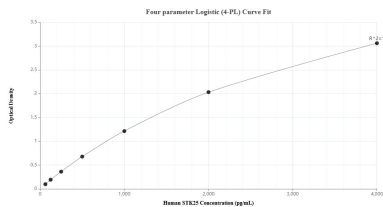
For technical support and original validation data for this product please contact:
T: 1 (888) 4PTGLAB (1-888-478-4522) (toll free in USA), or 1(312) 455-8498 (outside USA)
E: proteintech@ptglab.com
W: ptglab.com

This product is exclusively available under Proteintech Group brand and is not available to purchase from any other manufacturer.

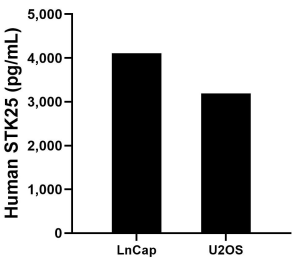
Selected Validation Data



Various lysates were subjected to SDS PAGE followed by western blot with 86216-1-RR (STK25 antibody) at dilution of 1:3000 incubated at room temperature for 1.5 hours. This data was developed using the same antibody clone with 86216-1-PBS in a different storage buffer formulation.



Sandwich ELISA standard curve of MP02398-1, Human STK25 Recombinant Matched Antibody Pair - PBS only. 86216-2-PBS was coated to a plate as the capture antibody and incubated with serial dilutions of standard Ag22964. 86216-1-PBS was HRP conjugated as the detection antibody. Range: 62.5-4000 pg/mL



The mean SNAI2/SLUG concentration was determined to be 4,108.0 pg/mL in LnCap cell extract based on a 2.0 mg/mL extract load and 3,191.3 pg/mL in U2OS cell extract based on a 2.2 mg/mL extract load.