

For Research Use Only

# PRPS1 Recombinant antibody, PBS Only (Detector)

Catalog Number: 86217-1-PBS



## Basic Information

<b>Catalog Number:</b> 86217-1-PBS	<b>GenBank Accession Number:</b> BC001605	<b>Purification Method:</b> Protein A purification
<b>Size:</b> 100ug , Concentration: 1 mg/ml by Nanodrop;	<b>GeneID (NCBI):</b> 5631	<b>CloneNo.:</b> 250201C1
<b>Source:</b> Rabbit	<b>UNIPROT ID:</b> P60891	
<b>Isotype:</b> IgG	<b>Full Name:</b> phosphoribosyl pyrophosphate synthetase 1	
<b>Immunogen Catalog Number:</b> AG7907	<b>Calculated MW:</b> 318 aa, 35 kDa	
	<b>Observed MW:</b> 33 kDa	

## Applications

**Tested Applications:**  
WB, Cytometric bead array, Indirect ELISA, Sample test

**Species Specificity:**  
human, mouse

## Product Information

86217-1-PBS targets PRPS1 as part of a matched antibody pair:

MP02295-1: 86217-2-PBS capture and 86217-1-PBS detection (validated in Cytometric bead array)

Unconjugated rabbit recombinant monoclonal antibody in PBS only (BSA and azide free) storage buffer at a concentration of 1 mg/mL, ready for conjugation. Created using Proteintech's proprietary in-house recombinant technology. Recombinant production enables unrivalled batch-to-batch consistency, easy scale-up, and future security of supply.

This conjugation ready format makes antibodies ideal for use in many applications including: ELISAs, multiplex assays requiring matched pairs, mass cytometry, and multiplex imaging applications. Antibody use should be optimized by the end user for each application and assay.

## Background Information

PRPS1, also named as Ribose-phosphate pyrophosphokinase 1, is a 318 amino acid protein, which belongs to the ribose-phosphate pyrophosphokinase family. PRPS1 can form Homodimer and the active form is probably a hexamer composed of 3 homodimers. PRPS1 catalyzes the synthesis of phosphoribosylpyrophosphate (PRPP) which is essential for nucleotide synthesis. PRPS1 as a module has an association with the Hepatocellular carcinoma.

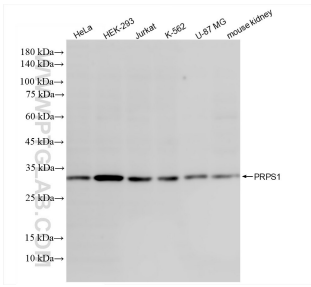
## Storage

**Storage:**  
Store at -80°C.  
**Storage Buffer:**  
PBS only, pH7.3

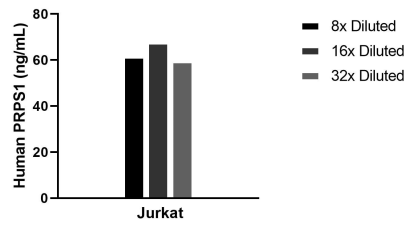
For technical support and original validation data for this product please contact:  
T: 1 (888) 4PTGLAB (1-888-478-4522) (toll free in USA), or 1(312) 455-8498 (outside USA)  
E: [proteintech@ptglab.com](mailto:proteintech@ptglab.com)  
W: [ptglab.com](http://ptglab.com)

This product is exclusively available under Proteintech Group brand and is not available to purchase from any other manufacturer.

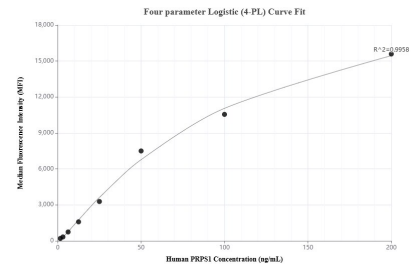
## Selected Validation Data



Various lysates were subjected to SDS PAGE followed by western blot with 86217-1-RR (PRPS1 antibody) at dilution of 1:10000 incubated at room temperature for 1.5 hours. This data was developed using the same antibody clone with 86217-1-PBS in a different storage buffer formulation.



The mean PRPS1 concentration was determined to be 62.7 ng/mL in Jurkat cell extract based on a 1.2 mg/mL extract load.



Cytometric bead array standard curve of MP02295-1, PRPS1 Recombinant Matched Antibody Pair, PBS Only. Capture antibody: 86217-2-PBS. Detection antibody: 86217-1-PBS. Standard: Ag7907. Range: 1.56-200 ng/mL.