

For Research Use Only

# PRPS1 Recombinant antibody, PBS Only (Capture)

Catalog Number: 86217-2-PBS



## Basic Information

|                                                             |                                                                |                                                       |
|-------------------------------------------------------------|----------------------------------------------------------------|-------------------------------------------------------|
| <b>Catalog Number:</b><br>86217-2-PBS                       | <b>GenBank Accession Number:</b><br>BC001605                   | <b>Purification Method:</b><br>Protein A purification |
| <b>Size:</b><br>100ug , Concentration: 1 mg/ml by Nanodrop; | <b>GeneID (NCBI):</b><br>5631                                  | <b>CloneNo.:</b><br>250201B12                         |
| <b>Source:</b><br>Rabbit                                    | <b>UNIPROT ID:</b><br>P60891                                   |                                                       |
| <b>Isotype:</b><br>IgG                                      | <b>Full Name:</b><br>phosphoribosyl pyrophosphate synthetase 1 |                                                       |
| <b>Immunogen Catalog Number:</b><br>AG7907                  | <b>Calculated MW:</b><br>318 aa, 35 kDa                        |                                                       |

## Applications

**Tested Applications:**  
Cytometric bead array, Indirect ELISA, Sample test

**Species Specificity:**  
human

## Product Information

86217-2-PBS targets PRPS1 as part of a matched antibody pair:

MP02295-1: 86217-2-PBS capture and 86217-1-PBS detection (validated in Cytometric bead array)

Unconjugated rabbit recombinant monoclonal antibody in PBS only (BSA and azide free) storage buffer at a concentration of 1 mg/mL, ready for conjugation. Created using Proteintech's proprietary in-house recombinant technology. Recombinant production enables unrivalled batch-to-batch consistency, easy scale-up, and future security of supply.

This conjugation ready format makes antibodies ideal for use in many applications including: ELISAs, multiplex assays requiring matched pairs, mass cytometry, and multiplex imaging applications. Antibody use should be optimized by the end user for each application and assay.

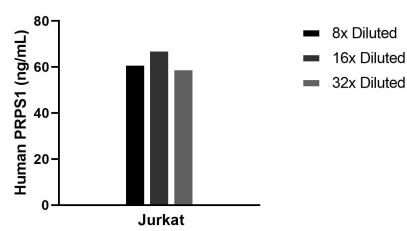
## Storage

**Storage:**  
Store at -80°C.  
**Storage Buffer:**  
PBS only, pH7.3

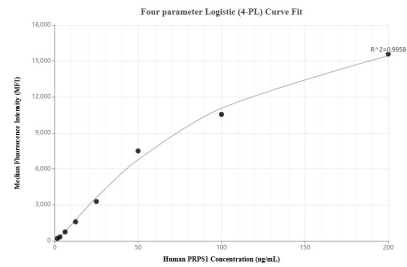
For technical support and original validation data for this product please contact:  
T: 1 (888) 4PTGLAB (1-888-478-4522) (toll free in USA), or 1(312) 455-8498 (outside USA)  
E: proteintech@ptglab.com  
W: ptglab.com

This product is exclusively available under Proteintech Group brand and is not available to purchase from any other manufacturer.

## Selected Validation Data



The mean PRPS1 concentration was determined to be 62.7 ng/mL in Jurkat cell extract based on a 1.2 mg/mL extract load.



Cytometric bead array standard curve of MP02295-1, PRPS1 Recombinant Matched Antibody Pair, PBS Only. Capture antibody: 86217-2-PBS. Detection antibody: 86217-1-PBS. Standard: Ag7907. Range: 1.56-200 ng/mL.