

For Research Use Only

# ATP5I Recombinant antibody

Catalog Number: 86218-2-RR



## Basic Information

<b>Catalog Number:</b> 86218-2-RR	<b>GenBank Accession Number:</b> BC003679	<b>Purification Method:</b> Protein A purification
<b>Size:</b> 100ul , Concentration: 1000 µg/ml by Nanodrop;	<b>GeneID (NCBI):</b> 521	<b>CloneNo.:</b> 250815C6
<b>Source:</b> Rabbit	<b>UNIPROT ID:</b> P56385	<b>Recommended Dilutions:</b> WB: 1:1000-1:6000 IF/ICC: 1:500-1:2000
<b>Isotype:</b> IgG	<b>Full Name:</b> ATP synthase, H <sup>+</sup> transporting, mitochondrial F <sub>0</sub> complex, subunit E	
<b>Immunogen Catalog Number:</b> AG9605	<b>Calculated MW:</b> 69 aa, 8 kDa	
	<b>Observed MW:</b> 8 kDa	

## Applications

<b>Tested Applications:</b> WB, IF/ICC, ELISA	<b>Positive Controls:</b>
<b>Species Specificity:</b> human	<b>WB :</b> HepG2 cells, U-251 cells, A431 cells, human heart tissue <b>IF/ICC :</b> HeLa cells,

## Background Information

ATP5I(ATP synthase subunit e) is also named as ATP5K and belongs to the ATPase e subunit family. The ATP5I gene encodes the e subunit of the mitochondrial ATP synthase F<sub>0</sub> complex. Mitochondrial membrane ATP synthase(F<sub>1</sub>F<sub>0</sub> ATP synthase or Complex V) produces ATP from ADP in the presence of a proton gradient across the membrane which is generated by electron transport complexes of the respiratory chain. Antisense ATP5I in a human HCC cell line inhibited cell growth suggesting that ATP5I acts through the MAP kinase pathway(PMID:11939412).

## Storage

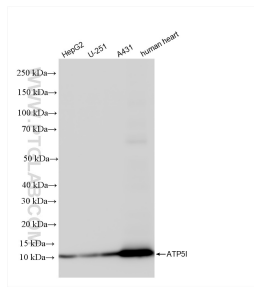
**Storage:**  
Store at -20°C. Stable for one year after shipment.  
**Storage Buffer:**  
PBS with 0.02% sodium azide and 50% glycerol, pH7.3  
**Aliquoting is unnecessary for -20°C storage**

\*\*\* 20ul sizes contain 0.1% BSA

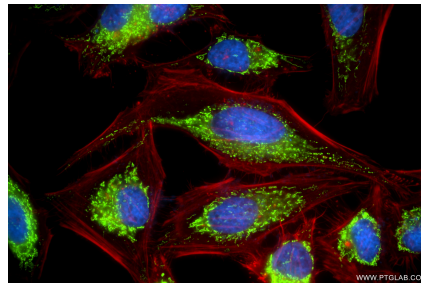
For technical support and original validation data for this product please contact:  
T: 1 (888) 4PTGLAB (1-888-478-4522) (toll free in USA), or 1(312) 455-8498 (outside USA)  
E: [proteintech@ptglab.com](mailto:proteintech@ptglab.com)  
W: [ptglab.com](http://ptglab.com)

This product is exclusively available under Proteintech Group brand and is not available to purchase from any other manufacturer.

## Selected Validation Data



Various lysates were subjected to SDS PAGE followed by western blot with 86218-2-RR (ATP5I antibody) at dilution of 1:3000 incubated at room temperature for 1.5 hours.



Immunofluorescent analysis of (4% PFA) fixed HeLa cells using ATP5I antibody (86218-2-RR, Clone: 250815C6) at dilution of 1:1000 and CoraLite® 488-Conjugated Goat Anti-Rabbit IgG(H+L) (SA00013-2), CL594-Phalloidin (red).