

For Research Use Only

NEK1 Recombinant antibody, PBS Only (Detector)

Catalog Number: 86224-1-PBS



Basic Information

Catalog Number: 86224-1-PBS	GenBank Accession Number: BC114491	Purification Method: Protein A purification
Size: 100ug, Concentration: 1 mg/ml by Nanodrop;	GeneID (NCBI): 4750	CloneNo.: 250128F4
Source: Rabbit	UNIPROT ID: Q96PY6	
Isotype: IgG	Full Name: NIMA (never in mitosis gene a)- related kinase 1	
Immunogen Catalog Number: AG25970	Calculated MW: 1258 aa, 143 kDa	

Applications

Tested Applications:
Sandwich ELISA, Indirect ELISA, Sample test

Species Specificity:
human

Product Information

86224-1-PBS targets NEK1 as part of a matched antibody pair:

MP02331-1: 86224-2-PBS capture and 86224-1-PBS detection (validated in Sandwich ELISA)

Unconjugated rabbit recombinant monoclonal antibody in PBS only (BSA and azide free) storage buffer at a concentration of 1 mg/mL, ready for conjugation. Created using Proteintech's proprietary in-house recombinant technology. Recombinant production enables unrivalled batch-to-batch consistency, easy scale-up, and future security of supply.

This conjugation ready format makes antibodies ideal for use in many applications including: ELISAs, multiplex assays requiring matched pairs, mass cytometry, and multiplex imaging applications. Antibody use should be optimized by the end user for each application and assay.

Storage

Storage:
Store at -80°C.
Storage Buffer:
PBS only, pH7.3

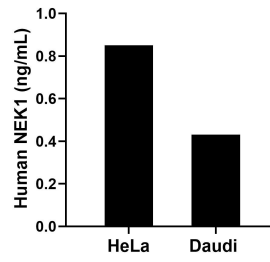
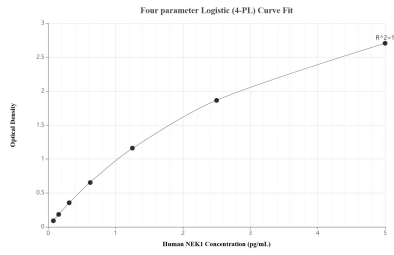
For technical support and original validation data for this product please contact:

T: 1 (888) 4PTGLAB (1-888-478-4522) (toll free
in USA), or 1(312) 455-8498 (outside USA)

E: proteintech@ptglab.com
W: ptglab.com

This product is exclusively available under Proteintech Group brand and is not available to purchase from any other manufacturer.

Selected Validation Data



Sandwich ELISA standard curve of MP02331-1, Human NEK1 Recombinant Matched Antibody Pair - PBS only. 86224-2-PBS was coated to a plate as the capture antibody and incubated with serial dilutions of standard Ag25970. 86224-1-PBS was HRP conjugated as the detection antibody. Range: 78.1-5000 pg/mL

The mean NEK1 concentration was determined to be 0.85 ng/mL in HeLa cell extract based on a 1.30 mg/mL extract load and 0.43 ng/mL in Daudi cell extract based on a 1.8 mg/mL extract load.