

For Research Use Only

PSMC2 Recombinant antibody

Catalog Number: 86228-3-RR



Basic Information

Catalog Number:

86228-3-RR

Size:

100ul , Concentration: 1000 µg/ml by Nanodrop;

Source:

Rabbit

Isotype:

IgG

Immunogen Catalog Number:

AG6700

GenBank Accession Number:

BC002589

GeneID (NCBI):

5701

UNIPROT ID:

P35998

Full Name:

proteasome (prosome, macropain)
26S subunit, ATPase, 2

Calculated MW:

49 kDa

Observed MW:

49 kDa

Purification Method:

Protein A purification

CloneNo.:

250914A9

Recommended Dilutions:

WB: 1:5000-1:50000

Applications

Tested Applications:

WB, ELISA

Species Specificity:

human, mouse, rat

Positive Controls:

WB : MOLT-4 cells, T-47D cells, DU 145 cells, A172 cells, C6 cells, mouse liver tissue, rat liver tissue

Storage

Storage:

Store at -20°C. Stable for one year after shipment.

Storage Buffer:

PBS with 0.02% sodium azide and 50% glycerol, pH7.3

Aliquoting is unnecessary for -20°C storage

*** 20ul sizes contain 0.1% BSA

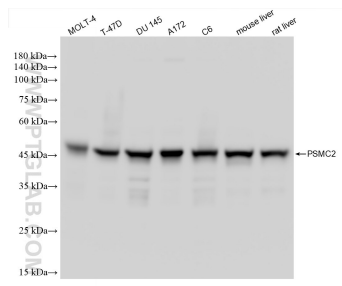
For technical support and original validation data for this product please contact:

T: 1 (888) 4PTGLAB (1-888-478-4522) (toll free in USA), or 1(312) 455-8498 (outside USA)

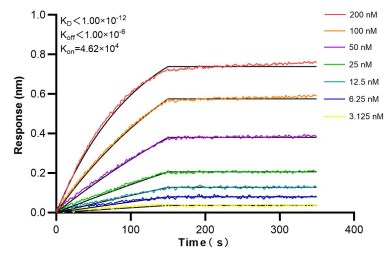
E: proteintech@ptglab.com
W: ptglab.com

This product is exclusively available under Proteintech Group brand and is not available to purchase from any other manufacturer.

Selected Validation Data



Various lysates were subjected to SDS PAGE followed by western blot with 86228-3-RR (PSMC2 antibody) at dilution of 1:30000 incubated at room temperature for 1.5 hours.



Biolayer interferometry (BLI) kinetic assays of 86228-3-RR against Human PSMC2 were performed. The affinity constant is below 1 pM.