

For Research Use Only

Mouse JAM-A/CD321 Recombinant antibody, PBS Only

Catalog Number: 86229-1-PBS



Basic Information

Catalog Number: 86229-1-PBS	GenBank Accession Number: NM_172647.2	Purification Method: Protein A purification
Size: 100ug , Concentration: 1 mg/ml by Nanodrop;	GeneID (NCBI): 16456	CloneNo.: 250060H5
Source: Rabbit	UNIPROT ID: O88792	
Isotype: IgG	Full Name: F11 receptor	
Immunogen Catalog Number: EG3117	Calculated MW: 32 kDa	
	Observed MW: 33 kDa	

Applications

Tested Applications:
WB, IF/ICC, Indirect ELISA

Species Specificity:
mouse, rat

Background Information

Junctional Adhesion Molecule-A (JAM-A), also known as CD321 or F11R, is a transmembrane glycoprotein belonging to the immunoglobulin superfamily. It is primarily located in the tight junctions of epithelial and endothelial cells and is also expressed on circulating platelets and leukocytes (PMID: 34533648). Targeting F11R/JAM-A with monoclonal antibodies or peptide antagonists has shown promise in inhibiting tumor growth and metastasis in mouse models (PMID: 37563645).

Storage

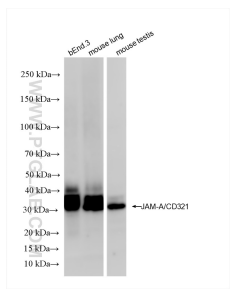
Storage:
Store at -80°C.

Storage Buffer:
PBS only, pH7.3

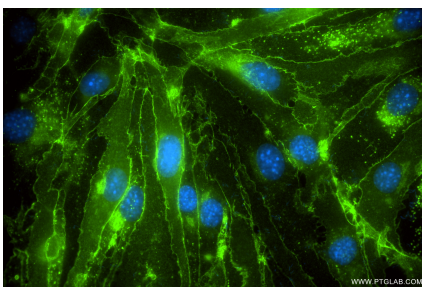
For technical support and original validation data for this product please contact:
T: 1 (888) 4PTGLAB (1-888-478-4522) (toll free in USA), or 1(312) 455-8498 (outside USA)
E: proteintech@ptglab.com
W: ptglab.com

This product is exclusively available under Proteintech Group brand and is not available to purchase from any other manufacturer.

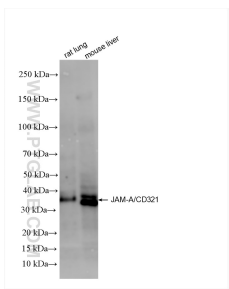
Selected Validation Data



Various lysates were subjected to SDS PAGE followed by western blot with 86229-1-RR (F11r(CD321) antibody) at dilution of 1:4000 incubated at room temperature for 1.5 hours. This data was developed using the same antibody clone with 86229-1-PBS in a different storage buffer formulation.



Immunofluorescent analysis of (4% PFA) fixed bEnd.3 cells using JAM-A/CD321 antibody (86229-1-RR, Clone: 250060H5) at dilution of 1:800 and CoraLite®488-Conjugated Goat Anti-Rabbit IgG(H+L) (SA00013-2). This data was developed using the same antibody clone with 86229-1-PBS in a different storage buffer formulation.



Various lysates were subjected to SDS PAGE followed by western blot with 86229-1-RR (F11r(CD321) antibody) at dilution of 1:4000 incubated at room temperature for 1.5 hours. This data was developed using the same antibody clone with 86229-1-PBS in a different storage buffer formulation.