

For Research Use Only

Mouse F11r CD321 Recombinant antibody, PBS Only (Detector)

Catalog Number: 86229-3-PBS



Basic Information

Catalog Number: 86229-3-PBS	GenBank Accession Number: NM_172647.2	Purification Method: Protein A purification
Size: 100ug , Concentration: 1 mg/ml by Nanodrop;	GeneID (NCBI): 16456	CloneNo.: 250060G8
Source: Rabbit	UNIPROT ID: O88792	
Isotype: IgG	Full Name: F11 receptor	
Immunogen Catalog Number: EG3117	Calculated MW: 32 kDa	

Applications

Tested Applications:
Sandwich ELISA, Indirect ELISA, Sample test

Species Specificity:
mouse

Product Information

86229-3-PBS targets F11r CD321 as part of a matched antibody pair:

MP02492-1: 86229-4-PBS capture and 86229-3-PBS detection (validated in Sandwich ELISA)

Unconjugated rabbit recombinant monoclonal antibody in PBS only (BSA and azide free) storage buffer at a concentration of 1 mg/mL, ready for conjugation. Created using Proteintech's proprietary in-house recombinant technology. Recombinant production enables unrivalled batch-to-batch consistency, easy scale-up, and future security of supply.

This conjugation ready format makes antibodies ideal for use in many applications including: ELISAs, multiplex assays requiring matched pairs, mass cytometry, and multiplex imaging applications. Antibody use should be optimized by the end user for each application and assay.

Storage

Storage:
Store at -80°C.
Storage Buffer:
PBS only, pH7.3

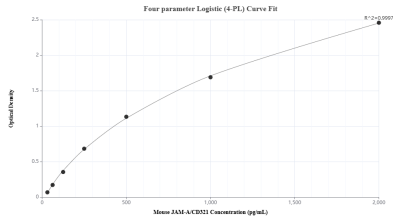
For technical support and original validation data for this product please contact:

T: 1 (888) 4PTGLAB (1-888-478-4522) (toll free in USA), or 1(312) 455-8498 (outside USA)

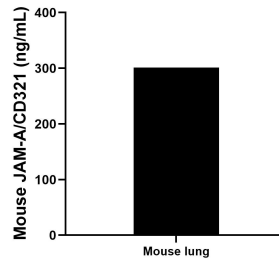
E: proteintech@ptglab.com
W: ptglab.com

This product is exclusively available under Proteintech Group brand and is not available to purchase from any other manufacturer.

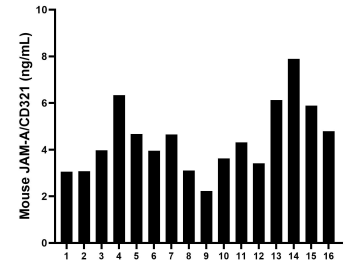
Selected Validation Data



Sandwich ELISA standard curve of MP02492-1, Mouse JAM-A/CD321 Recombinant Matched Antibody Pair - PBS only. 86229-4-PBS was coated to a plate as the capture antibody and incubated with serial dilutions of standard Eg3117. 86229-3-PBS was HRP conjugated as the detection antibody. Range: 31.25-2000 pg/mL



The mean JAM-A/CD321 concentration was determined to be 301.19 ng/mL in mouse lung tissue extract based on a 5.3 mg/mL extract load.



Serum of sixteen mice was measured. The mouse JAM-A/CD321 concentration of detected samples was determined to be 4.44 ng/mL with a range of 2.23 - 7.90 ng/mL