

For Research Use Only

Mouse Olr1 Recombinant monoclonal antibody, PBS Only (Capture)

Catalog Number:86230-2-PBS



Basic Information

Catalog Number: 86230-2-PBS	GenBank Accession Number: NM_138648.2	Purification Method: Protein A purification
Size: 100ug , Concentration: 1 mg/ml by Nanodrop;	GeneID (NCBI): 108078	CloneNo.: 250111E7
Source: Rabbit	UNIPROT ID: Q9EQ09	
Isotype: IgG	Full Name: oxidized low density lipoprotein (lectin-like) receptor 1	
Immunogen Catalog Number: EG2473	Calculated MW: 42 kDa	

Applications

Tested Applications:
Cytometric bead array, Sandwich ELISA, Indirect ELISA

Species Specificity:
mouse

Product Information

86230-2-PBS targets Olr1 as part of a matched antibody pair.

MP02348-1: 86230-2-PBS capture and 86230-1-PBS detection (validated in Cytometric bead array, Sandwich ELISA)

Unconjugated rabbit recombinant monoclonal antibody in PBS only (BSA and azide free) storage buffer at a concentration of 1 mg/mL, ready for conjugation. Created using Proteintech's proprietary in-house recombinant technology. Recombinant production enables unrivalled batch-to-batch consistency, easy scale-up, and future security of supply.

This conjugation ready format makes antibodies ideal for use in many applications including: ELISAs, multiplex assays requiring matched pairs, mass cytometry, and multiplex imaging applications. Antibody use should be optimized by the end user for each application and assay.

Storage

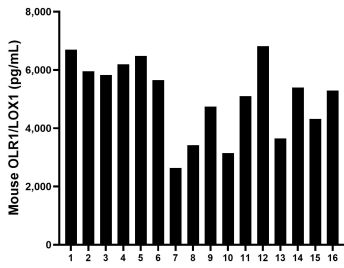
Storage:
Store at -80°C.

Storage Buffer:
PBS only, pH7.3

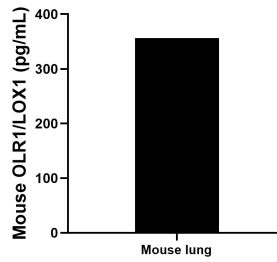
For technical support and original validation data for this product please contact:
T: 1 (888) 4PTGLAB (1-888-478-4522) (toll free in USA), or 1(312) 455-8498 (outside USA) E: proteintech@ptglab.com
W: ptglab.com

This product is exclusively available under Proteintech Group brand and is not available to purchase from any other manufacturer.

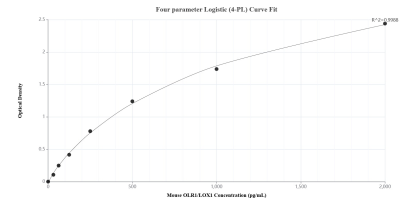
Selected Validation Data



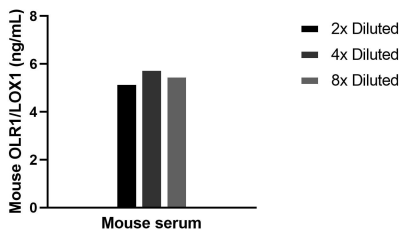
Serum of sixteen mice was measured. The OLR1/LOX1 concentration of detected samples was determined to be 5,082.6 pg/mL with a range of 2,635.3-6,814.9 pg/mL.



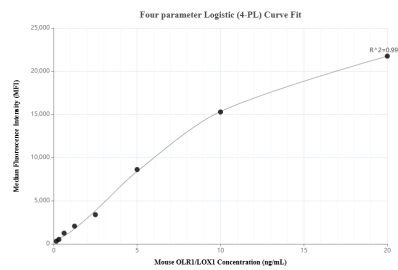
Mouse lung, cut into 1-2 mm pieces, was cultured in RPMI supplemented with 10% fetal bovine serum. An aliquot of the cell culture supernatant was removed, assayed for mouse OLR1/LOX1 and measured 356.4 pg/mL.



Sandwich ELISA standard curve of MP02348-1, Mouse OLR1/LOX1 Recombinant Matched Antibody Pair - PBS only. 86230-2-PBS was coated to a plate as the capture antibody and incubated with serial dilutions of standard Eg2473. 86230-1-PBS was HRP conjugated as the detection antibody. Range: 31.3-2000 pg/mL.



The mean OLR1/LOX1 concentration was determined to be 5.5 ng/mL in mouse serum.



Cytometric bead array standard curve of MP02348-1, MOUSE OLR1/LOX1 Recombinant Matched Antibody Pair, PBS Only. Capture antibody: 86230-2-PBS. Detection antibody: 86230-1-PBS. Standard: Eg2473. Range: 0.156-20 ng/mL.