

For Research Use Only

Cytokeratin 16 Recombinant antibody, PBS Only

Catalog Number: 86235-1-PBS



Basic Information

Catalog Number: 86235-1-PBS	GenBank Accession Number: BC039169	Purification Method: Protein A purification
Size: 100ug , Concentration: 1 mg/ml by Nanodrop;	GeneID (NCBI): 3868	CloneNo.: 250939G10
Source: Rabbit	UNIPROT ID: P08779	
Isotype: IgG	Full Name: keratin 16	
	Calculated MW: 473 aa, 51 kDa	
	Observed MW: 48-50 kDa	

Applications

Tested Applications:
WB, Indirect ELISA

Species Specificity:
human

Background Information

Cytokeratin 16 is a Type I acidic keratin (classified as KRT16 in the human gene nomenclature) that pairs with Type II basic keratins (e.g., CK-6) to form intermediate filaments in epithelial cells. It is prominently expressed in stratified epithelia, particularly under conditions of stress, proliferation, or pathology. CK-16 is constitutively expressed in specialized epithelia (e.g., nail beds, hair follicles, oral mucosa) but is normally absent in healthy, quiescent skin.

Storage

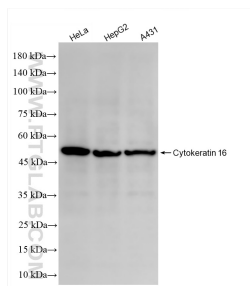
Storage:
Store at -80°C.

Storage Buffer:
PBS only, pH7.3

For technical support and original validation data for this product please contact:
T: 1 (888) 4PTGLAB (1-888-478-4522) (toll free in USA), or 1(312) 455-8498 (outside USA)
E: proteintech@ptglab.com
W: ptglab.com

This product is exclusively available under Proteintech Group brand and is not available to purchase from any other manufacturer.

Selected Validation Data



Various lysates were subjected to SDS PAGE followed by western blot with 86235-1-RR (KRT16 antibody) at dilution of 1:2000 incubated at room temperature for 1.5 hours. This data was developed using the same antibody clone with 86235-1-PBS in a different storage buffer formulation.