

For Research Use Only

Cytokeratin 16 Recombinant monoclonal antibody

Catalog Number: 86235-1-RR



Basic Information

Catalog Number:

86235-1-RR

Size:

100ul , Concentration: 1000 ug/ml by Nanodrop;

Source:

Rabbit

Isotype:

IgG

GenBank Accession Number:

BC039169

GeneID (NCBI):

3868

UNIPROT ID:

P08779

Full Name:

keratin 16

Calculated MW:

473 aa, 51 kDa

Observed MW:

48-50 kDa

Purification Method:

Protein A purification

CloneNo.:

250939G10

Recommended Dilutions:

WB: 1:1000-1:4000

Applications

Tested Applications:

WB, ELISA

Species Specificity:

human

Positive Controls:

WB : HeLa cells, HepG2 cells, A431 cells

Background Information

Cytokeratin 16 is a Type I acidic keratin (classified as KRT16 in the human gene nomenclature) that pairs with Type II basic keratins (e.g., CK-6) to form intermediate filaments in epithelial cells. It is prominently expressed in stratified epithelia, particularly under conditions of stress, proliferation, or pathology. CK-16 is constitutively expressed in specialized epithelia (e.g., nail beds, hair follicles, oral mucosa) but is normally absent in healthy, quiescent skin.

Storage

Storage:

Store at -20°C. Stable for one year after shipment.

Storage Buffer:

PBS with 0.02% sodium azide and 50% glycerol, pH7.3

Aliquoting is unnecessary for -20°C storage

*** 20ul sizes contain 0.1%BSA

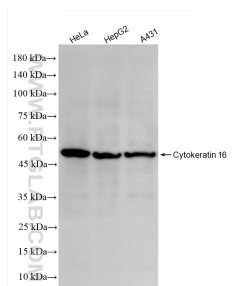
For technical support and original validation data for this product please contact:

T: 1 (888) 4PTGLAB (1-888-478-4522) (toll free in USA), or 1(312) 455-8498 (outside USA)

E: proteintech@ptglab.com
W: ptglab.com

This product is exclusively available under Proteintech Group brand and is not available to purchase from any other manufacturer.

Selected Validation Data



Various lysates were subjected to SDS PAGE followed by western blot with 86235-1-RR (KRT16 antibody) at dilution of 1:2000 incubated at room temperature for 1.5 hours.