

For Research Use Only

PSMC1 Recombinant antibody

Catalog Number: 86237-1-RR



Basic Information

Catalog Number: 86237-1-RR	GenBank Accession Number: BC016368	Purification Method: Protein A purification
Size: 100ul , Concentration: 1000 µg/ml by Nanodrop;	GeneID (NCBI): 5700	CloneNo.: 251014B9
Source: Rabbit	UNIPROT ID: P62191	Recommended Dilutions: WB: 1:5000-1:50000 IHC: 1:500-1:2000 IF/ICC: 1:50-1:500
Isotype: IgG	Full Name: proteasome (prosome, macropain) 26S subunit, ATPase, 1	
Immunogen Catalog Number: AG1677	Calculated MW: 49 kDa	
	Observed MW: 52-60 kDa	

Applications

Tested Applications: WB, IHC, IF/ICC, ELISA	Positive Controls:
Species Specificity: human, mouse, rat	WB : A549 cells, HeLa cells, Jurkat cells, NIH/3T3 cells, mouse brain tissue, mouse lung tissue, rat brain tissue
Note-IHC: suggested antigen retrieval with TE buffer pH 9.0; (*) Alternatively, antigen retrieval may be performed with citrate buffer pH 6.0	IHC : mouse cerebellum tissue,
	IF/ICC : Jurkat cells,

Storage

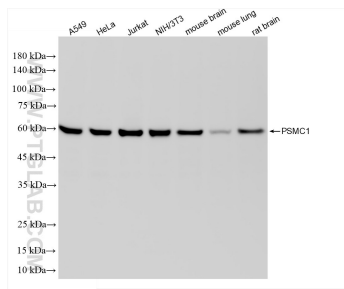
Storage:
Store at -20°C. Stable for one year after shipment.
Storage Buffer:
PBS with 0.02% sodium azide and 50% glycerol, pH7.3
Aliquoting is unnecessary for -20°C storage

*** 20ul sizes contain 0.1% BSA

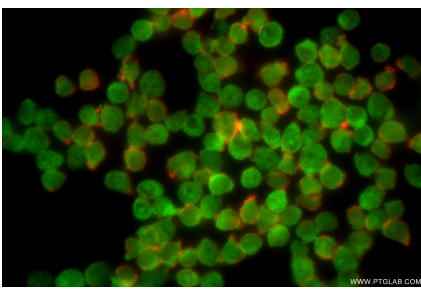
For technical support and original validation data for this product please contact:
T: 1 (888) 4PTGLAB (1-888-478-4522) (toll free in USA), or 1(312) 455-8498 (outside USA)
E: proteintech@ptglab.com
W: ptglab.com

This product is exclusively available under Proteintech Group brand and is not available to purchase from any other manufacturer.

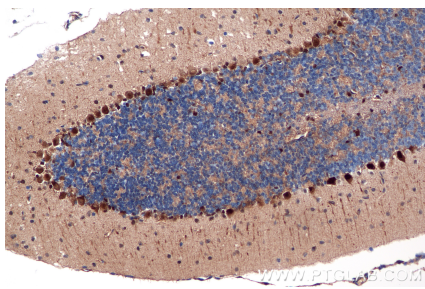
Selected Validation Data



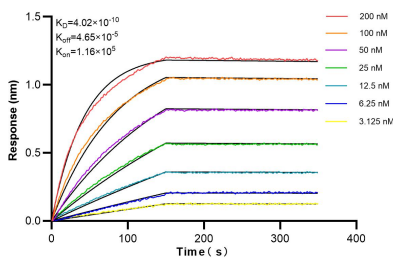
Various lysates were subjected to SDS PAGE followed by western blot with 86237-1-RR (PSMC1 antibody) at dilution of 1:10000 incubated at room temperature for 1.5 hours.



Immunofluorescent analysis of (4% PFA) fixed Jurkat cells using PSMC1 antibody (86237-1-RR, Clone: 251014B9) at dilution of 1:200 and CoraLite® 488-Conjugated Goat Anti-Rabbit IgG(H+L) (SA00013-2), CL594-Phalloidin (red).



Immunohistochemical analysis of paraffin-embedded mouse cerebellum tissue slide using 86237-1-RR (PSMC1 antibody) at dilution of 1:1000 (under 20x lens). Heat mediated antigen retrieval with Tris-EDTA buffer (pH 9.0).



Biolayer interferometry (BLI) kinetic assays of 86237-1-RR against Human PSMC1 were performed. The affinity constant is 0.402 nM.