

For Research Use Only

Pan-Keratin (Type I) Recombinant monoclonal antibody

Catalog Number: 86238-2-RR



Basic Information

Catalog Number:

86238-2-RR

Size:

100ul, Concentration: 1000 µg/ml by Nanodrop;

Source:

Rabbit

Isotype:

IgG

GenBank Accession Number:

GeneID (NCBI):

Pan-Keratin (Type I)

UNIPROT ID:

Q15323

Full Name:

Observed MW:

45-65 kDa

Purification Method:

Protein A purification

CloneNo.:

251039C1

Recommended Dilutions:

WB: 1:5000-1:50000

IHC: 1:500-1:2000

IF-P: 1:250-1:1000

Applications

Tested Applications:

WB, IHC, IF-P, ELISA

Species Specificity:

human, mouse, rat

Note-IHC: suggested antigen retrieval with TE buffer pH 9.0; (*) Alternatively, antigen retrieval may be performed with citrate buffer pH 6.0

Positive Controls:

WB: HaCaT cells, A431 cells, HT-29 cells, mouse skin tissue, rat skin tissue, rat colon tissue

IHC: human prostate cancer tissue, Human Kidney(renal cell) Cancer, human tonsil tissue

IF-P: human cervical cancer tissue, human colon cancer tissue, human lung cancer tissue, mouse skin tissue

Background Information

Keratin is a family of fibrous structural proteins that are key components in hair, nails, feathers, hooves, and the outer layer of skin (epidermis). There are two main types of keratin: Type I (acidic) and Type II (basic/neutral), which form heterodimers to create intermediate filaments, providing mechanical strength to cells. Type I keratins (or Type I cytokeratins) are acidic, low molecular weight (40-64 kDa) proteins that form Type I intermediate filaments (IFs) in the cytoplasmic cytoskeleton of all mammalian epithelial cells. They are encoded on chromosome 17q and include keratins K9-K10, K12-K28, and K31-K40.

Storage

Storage:

Store at -20°C. Stable for one year after shipment.

Storage Buffer:

PBS with 0.02% sodium azide and 50% glycerol, pH7.3

Aliquoting is unnecessary for -20°C storage

*** 20ul sizes contain 0.1% BSA

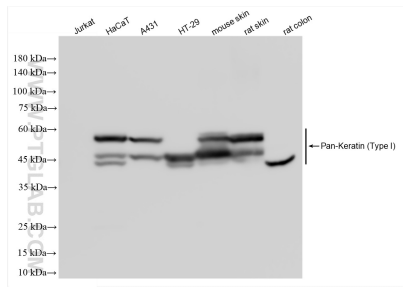
For technical support and original validation data for this product please contact:

T: 1 (888) 4PTGLAB (1-888-478-4522) (toll free in USA), or 1(312) 455-8498 (outside USA)

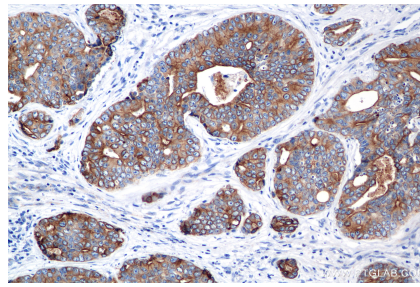
E: proteintech@ptglab.com
W: ptglab.com

This product is exclusively available under Proteintech Group brand and is not available to purchase from any other manufacturer.

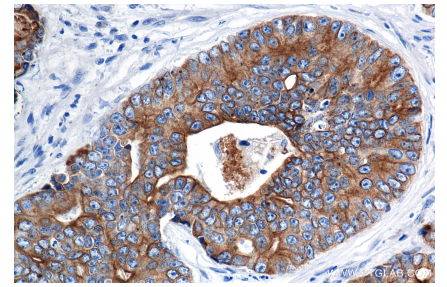
Selected Validation Data



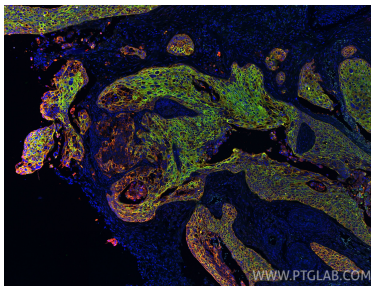
Various lysates were subjected to SDS PAGE followed by western blot with 86238-2-RR (Pan-Keratin (Type I) antibody) at dilution of 1:30000 incubated at room temperature for 1.5 hours.



Immunohistochemical analysis of paraffin-embedded human prostate cancer tissue slide using 86238-2-RR (Pan-Keratin (Type I) antibody) at dilution of 1:1000 (under 20x lens). Heat mediated antigen retrieval with Tris-EDTA buffer (pH 9.0).



Immunohistochemical analysis of paraffin-embedded human prostate cancer tissue slide using 86238-2-RR (Pan-Keratin (Type I) antibody) at dilution of 1:1000 (under 40x lens). Heat mediated antigen retrieval with Tris-EDTA buffer (pH 9.0).



Immunofluorescent analysis of (4% PFA) fixed paraffin-embedded human cervical cancer tissue using Pan-Keratin (Type I) antibody (86238-2-RR, Clone: 251039C1) at dilution of 1:500 and CoraLite® 594-Conjugated Goat Anti-Rabbit IgG(H+L) (SA00013-4), Pan-Keratin (TypeII) antibody 86370-1-RR labeled with FlexAble 2.0 CoraLite® Plus 488 Kit (KFA501, green). Heat mediated antigen retrieval with Tris-EDTA buffer (pH 9.0).