

For Research Use Only

# Pan-Keratin (Type I) Recombinant monoclonal antibody

Catalog Number:86238-5-RR



## Basic Information

<b>Catalog Number:</b> 86238-5-RR	<b>GenBank Accession Number:</b> GeneID (NCBI): UNIPROT ID: Q15323	<b>Purification Method:</b> Protein A purification
<b>Size:</b> 100ul , Concentration: 1000 µg/ml by Nanodrop;	<b>Full Name:</b> <b>Observed MW:</b> 44-50 kDa	<b>CloneNo.:</b> 251001E5
<b>Source:</b> Rabbit		<b>Recommended Dilutions:</b> WB: 1:5000-1:50000 IHC: 1:500-1:2000 IF-P: 1:250-1:1000
<b>Isotype:</b> IgG		

## Applications

### Tested Applications:

WB, IHC, IF-P, ELISA

### Species Specificity:

human

**Note-IHC: suggested antigen retrieval with TE buffer pH 9.0; (\*) Alternatively, antigen retrieval may be performed with citrate buffer pH 6.0**

### Positive Controls:

WB : HaCaT cells, A431 cells, HT-29 cells, MCF-7 cells

IHC : human tonsillitis tissue, human stomach cancer tissue

IF-P : human tonsil tissue,

## Background Information

Keratin is a family of fibrous structural proteins that are key components in hair, nails, feathers, hooves, and the outer layer of skin (epidermis). There are two main types of keratin: Type I (acidic) and Type II (basic/neutral), which form heterodimers to create intermediate filaments, providing mechanical strength to cells. Type I keratins (or Type I cytokeratins) are acidic, low molecular weight (40-64 kDa) proteins that form Type I intermediate filaments (IFs) in the cytoplasmic cytoskeleton of all mammalian epithelial cells. They are encoded on chromosome 17q and include keratins K9-K10, K12-K28, and K31-K40.

## Storage

### Storage:

Store at -20°C. Stable for one year after shipment.

### Storage Buffer:

PBS with 0.02% sodium azide and 50% glycerol, pH7.3

Aliquoting is unnecessary for -20°C storage

\*\*\* 20ul sizes contain 0.1% BSA

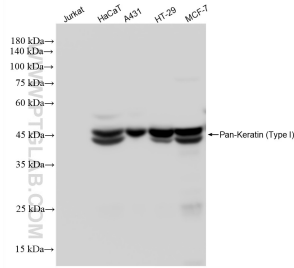
For technical support and original validation data for this product please contact:

T: 1 (888) 4PTGLAB (1-888-478-4522) (toll free in USA), or 1(312) 455-8498 (outside USA)

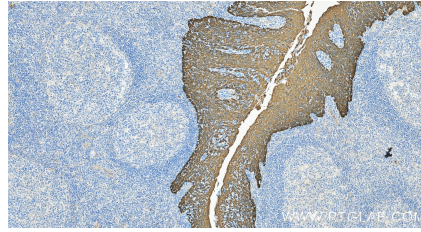
E: proteintech@ptglab.com  
W: ptglab.com

This product is exclusively available under Proteintech Group brand and is not available to purchase from any other manufacturer.

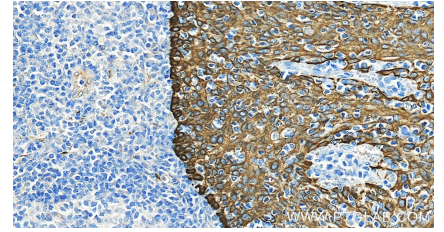
## Selected Validation Data



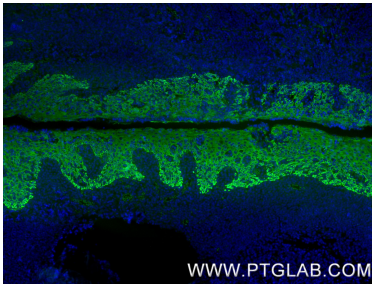
Various lysates were subjected to SDS PAGE followed by western blot with 86238-5-RR (Pan-Keratin (Type I) antibody) at dilution of 1:10000 incubated at room temperature for 1.5 hours.



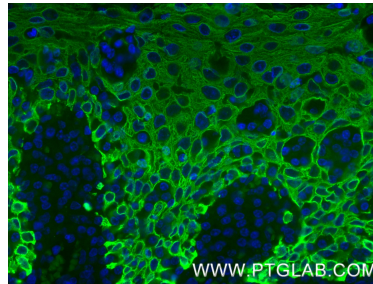
Immunohistochemical analysis of paraffin-embedded human tonsillitis tissue slide using 86238-5-RR (Pan-Keratin (Type I) antibody) at dilution of 1:1000 (under 20x lens). Heat mediated antigen retrieval with Tris-EDTA buffer (pH 9.0).



Immunohistochemical analysis of paraffin-embedded human tonsillitis tissue slide using 86238-5-RR (Pan-Keratin (Type I) antibody) at dilution of 1:1000 (under 20x lens). Heat mediated antigen retrieval with Tris-EDTA buffer (pH 9.0).



Immunofluorescent analysis of (4% PFA) fixed paraffin-embedded human tonsil tissue using Pan-Keratin (Type I) antibody (86238-5-RR, Clone: 251001E5) at dilution of 1:500 and CoraLite® 488-Conjugated Goat Anti-Rabbit IgG(H+L) (SA00013-2). Heat mediated antigen retrieval with Tris-EDTA buffer (pH 9.0).



Immunofluorescent analysis of (4% PFA) fixed paraffin-embedded human tonsil tissue using Pan-Keratin (Type I) antibody (86238-5-RR, Clone: 251001E5) at dilution of 1:500 and CoraLite® 488-Conjugated Goat Anti-Rabbit IgG(H+L) (SA00013-2). Heat mediated antigen retrieval with Tris-EDTA buffer (pH 9.0).