

For Research Use Only

# G6PD Recombinant antibody

Catalog Number: 86240-1-RR



## Basic Information

|  |  |  |
|--|--|--|
| <b>Catalog Number:</b><br>86240-1-RR                           | <b>GenBank Accession Number:</b><br>BC000337           | <b>Purification Method:</b><br>Protein A purification                      |
| <b>Size:</b><br>100ul , Concentration: 1000 µg/ml by Nanodrop; | <b>GeneID (NCBI):</b><br>2539                          | <b>CloneNo.:</b><br>250831F8   |
| <b>Source:</b><br>Rabbit                                       | <b>UNIPROT ID:</b><br>P11413                           | <b>Recommended Dilutions:</b><br>WB: 1:5000-1:50000<br>IF/ICC: 1:200-1:800 |
| <b>Isotype:</b><br>IgG   | <b>Full Name:</b><br>glucose-6-phosphate dehydrogenase |  |
| <b>Immunogen Catalog Number:</b><br>AG21862                    | <b>Calculated MW:</b><br>59 kDa                        |  |
|  | <b>Observed MW:</b><br>60 kDa                          |  |

## Applications

|  |   |
|--|---|
| <b>Tested Applications:</b><br>WB, IF/ICC, ELISA | <b>Positive Controls:</b>   |
| <b>Species Specificity:</b><br>human, mouse      | <b>WB :</b> HeLa cells, MCF-7 cells, HT-29 cells, HEK-293 cells, A549 cells |
|  | <b>IF/ICC :</b> HeLa cells, NIH/3T3 cells                                   |

## Background Information

G6PD (Glucose-6-phosphate 1-dehydrogenase) belongs to the glucose-6-phosphate dehydrogenase family. It is a housekeeping enzyme encoded in mammals by an X-linked gene. G6PD has important functions in intermediary metabolism because it catalyzes the first step in the pentose phosphate pathway and provides reductive potential in the form of NADPH.(PMID:7489710). This protein has 3 isoforms produced by alternative splicing.

## Storage

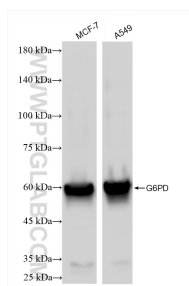
**Storage:**  
Store at -20°C. Stable for one year after shipment.  
**Storage Buffer:**  
PBS with 0.02% sodium azide and 50% glycerol, pH7.3  
**Aliquoting is unnecessary for -20°C storage**

\*\*\* 20ul sizes contain 0.1% BSA

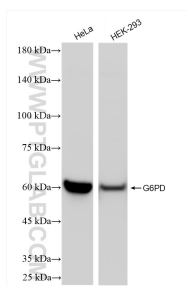
For technical support and original validation data for this product please contact:  
T: 1 (888) 4PTGLAB (1-888-478-4522) (toll free in USA), or 1(312) 455-8498 (outside USA)  
E: [proteintech@ptglab.com](mailto:proteintech@ptglab.com)  
W: [ptglab.com](http://ptglab.com)

This product is exclusively available under Proteintech Group brand and is not available to purchase from any other manufacturer.

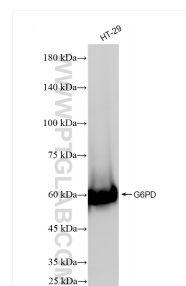
## Selected Validation Data



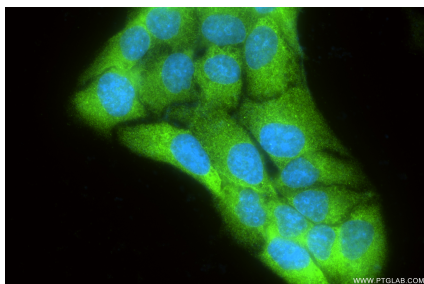
Various lysates were subjected to SDS PAGE followed by western blot with 86240-1-RR (G6PD antibody) at dilution of 1:10000 incubated at room temperature for 1.5 hours.



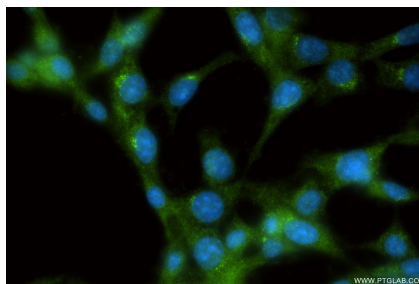
Various lysates were subjected to SDS PAGE followed by western blot with 86240-1-RR (G6PD antibody) at dilution of 1:10000 incubated at room temperature for 1.5 hours.



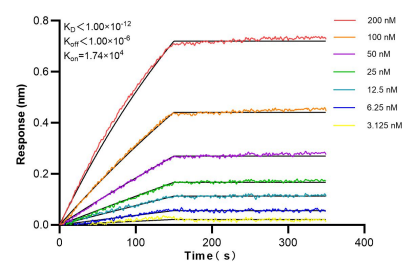
HT-29 cells were subjected to SDS PAGE followed by western blot with 86240-1-RR (G6PD antibody) at dilution of 1:10000 incubated at room temperature for 1.5 hours.



Immunofluorescent analysis of (-20°C Methanol) fixed HeLa cells using G6PD antibody (86240-1-RR, Clone: 250831F8) at dilution of 1:400 and CoraLite®488-Conjugated Goat Anti-Rabbit IgG(H+L) (SA00013-2).



Immunofluorescent analysis of (-20°C Methanol) fixed NIH/3T3 cells using G6PD antibody (86240-1-RR, Clone: 250831F8) at dilution of 1:400 and CoraLite®488-Conjugated Goat Anti-Rabbit IgG(H+L) (SA00013-2).



Biolayer interferometry (BLI) kinetic assays of 86240-1-RR against Human G6PD were performed. The affinity constant is below 1 pM.