

For Research Use Only

PSMB8 Recombinant antibody, PBS Only

Catalog Number: 86241-1-PBS



Basic Information

Catalog Number:

86241-1-PBS

Size:

100ug , Concentration: 1 mg/ml by
Nanodrop;

Source:

Rabbit

Isotype:

IgG

Immunogen Catalog Number:

AG6660

GenBank Accession Number:

BC001114

GeneID (NCBI):

5696

UNIPROT ID:

P28062

Full Name:

proteasome (prosome, macropain)
subunit, beta type, 8 (large
multifunctional peptidase 7)

Calculated MW:

30 kDa

Observed MW:

23 kDa, 30 kDa

Purification Method:

Protein A purification

CloneNo.:

250865C7

Applications

Tested Applications:

WB, IF/ICC, Indirect ELISA

Species Specificity:

human

Storage

Storage:

Store at -80°C.

Storage Buffer:

PBS only, pH7.3

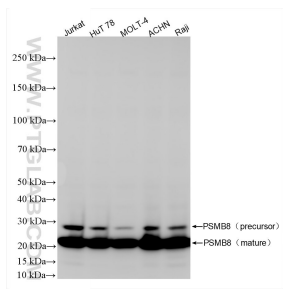
For technical support and original validation data for this product please contact:

T: 1 (888) 4PTGLAB (1-888-478-4522) (toll free
in USA), or 1(312) 455-8498 (outside USA)

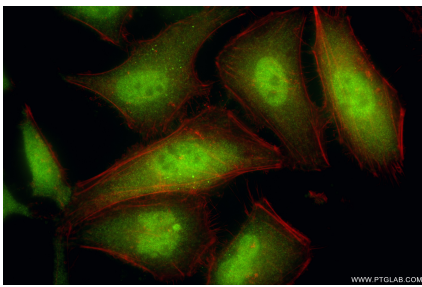
E: proteintech@ptglab.com
W: ptglab.com

This product is exclusively available under Proteintech
Group brand and is not available to purchase from any
other manufacturer.

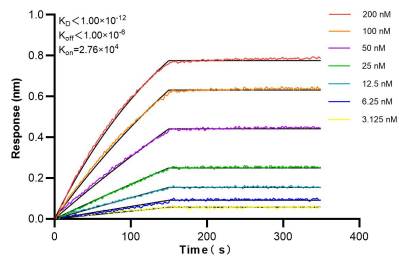
Selected Validation Data



Various lysates were subjected to SDS PAGE followed by western blot with 86241-1-RR (PSMB8 antibody) at dilution of 1:10000 incubated at room temperature for 1.5 hours. This data was developed using the same antibody clone with 86241-1-PBS in a different storage buffer formulation.



Immunofluorescent analysis of (4% PFA) fixed HeLa cells using PSMB8 antibody (86241-1-RR, Clone: 250865C7) at dilution of 1:400 and CoraLite® 488-Conjugated Goat Anti-Rabbit IgG(H+L) (SA00013-2), CL594-Phalloidin (red). This data was developed using the same antibody clone with 86241-1-PBS in a different storage buffer formulation.



Biolayer interferometry (BLI) kinetic assays of 86241-1-RR against Human PSMB8 were performed. The affinity constant is below 1 pM.