

For Research Use Only

# PSMB8 Recombinant antibody

Catalog Number: 86241-1-RR



## Basic Information

### Catalog Number:

86241-1-RR

### Size:

100ul , Concentration: 1000 µg/ml by Nanodrop;

### Source:

Rabbit

### Isotype:

IgG

### Immunogen Catalog Number:

AG6660

### GenBank Accession Number:

BC001114

### GeneID (NCBI):

5696

### UNIPROT ID:

P28062

### Full Name:

proteasome (prosome, macropain) subunit, beta type, 8 (large multifunctional peptidase 7)

### Calculated MW:

30 kDa

### Observed MW:

23 kDa, 30 kDa

### Purification Method:

Protein A purification

### CloneNo.:

250865C7

### Recommended Dilutions:

WB: 1:5000-1:50000

IF/ICC: 1:200-1:800

## Applications

### Tested Applications:

WB, IF/ICC, ELISA

### Species Specificity:

human

### Positive Controls:

WB : Jurkat cells, HuT 78 cells, MOLT-4 cells, ACHN cells, Raji cells

IF/ICC : HeLa cells,

## Storage

### Storage:

Store at -20°C. Stable for one year after shipment.

### Storage Buffer:

PBS with 0.02% sodium azide and 50% glycerol, pH7.3

Aliquoting is unnecessary for -20°C storage

\*\*\* 20ul sizes contain 0.1% BSA

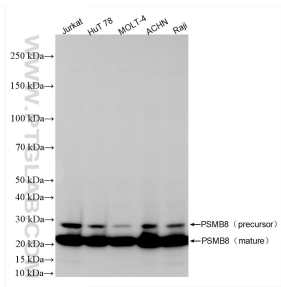
For technical support and original validation data for this product please contact:

T: 1 (888) 4PTGLAB (1-888-478-4522) (toll free in USA), or 1(312) 455-8498 (outside USA)

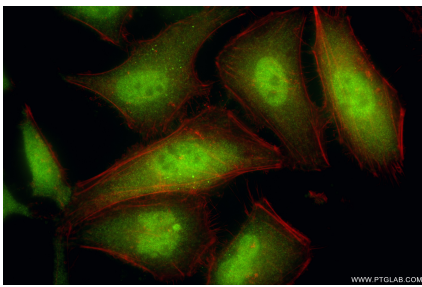
E: [proteintech@ptglab.com](mailto:proteintech@ptglab.com)  
W: [ptglab.com](http://ptglab.com)

This product is exclusively available under Proteintech Group brand and is not available to purchase from any other manufacturer.

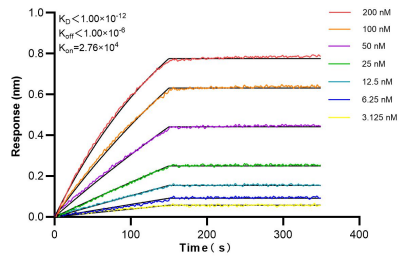
## Selected Validation Data



Various lysates were subjected to SDS PAGE followed by western blot with 86241-1-RR (PSMB8 antibody) at dilution of 1:10000 incubated at room temperature for 1.5 hours.



Immunofluorescent analysis of (4% PFA) fixed HeLa cells using PSMB8 antibody (86241-1-RR, Clone: 250865C7) at dilution of 1:400 and CoraLite® 488-Conjugated Goat Anti-Rabbit IgG(H+L) (SA00013-2), CL594-Phalloidin (red).



Biolayer interferometry (BLI) kinetic assays of 86241-1-RR against Human PSMB8 were performed. The affinity constant is below 1 pM.