

For Research Use Only

# Pancreatic alpha-amylase Recombinant antibody, PBS Only (Capture)

Catalog Number: 86243-1-PBS



## Basic Information

<b>Catalog Number:</b> 86243-1-PBS	<b>GenBank Accession Number:</b> NM_000699.4	<b>Purification Method:</b> Protein A purification
<b>Size:</b> 100ug , Concentration: 1 mg/ml by Nanodrop;	<b>GeneID (NCBI):</b> 279	<b>CloneNo.:</b> 250679H5
<b>Source:</b> Rabbit	<b>UNIPROT ID:</b> P04746-1	
<b>Isotype:</b> IgG	<b>Full Name:</b> amylase, alpha 2A (pancreatic)	
<b>Immunogen Catalog Number:</b> EG3071	<b>Calculated MW:</b> 58 kDa	
	<b>Observed MW:</b> 58-60 kDa	

## Applications

**Tested Applications:**  
WB, Sandwich ELISA, Indirect ELISA, Sample test

**Species Specificity:**  
human

## Product Information

86243-1-PBS targets Pancreatic alpha-amylase as part of a matched antibody pair:

MP02585-1: 86243-1-PBS capture and 86243-2-PBS detection (validated in Sandwich ELISA)

Unconjugated rabbit recombinant monoclonal antibody in PBS only (BSA and azide free) storage buffer at a concentration of 1 mg/mL, ready for conjugation. Created using Proteintech's proprietary in-house recombinant technology. Recombinant production enables unrivalled batch-to-batch consistency, easy scale-up, and future security of supply.

This conjugation ready format makes antibodies ideal for use in many applications including: ELISAs, multiplex assays requiring matched pairs, mass cytometry, and multiplex imaging applications. Antibody use should be optimized by the end user for each application and assay.

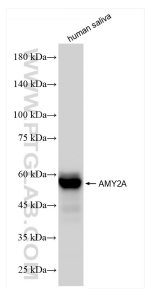
## Storage

**Storage:**  
Store at -80°C.  
**Storage Buffer:**  
PBS only, pH7.3

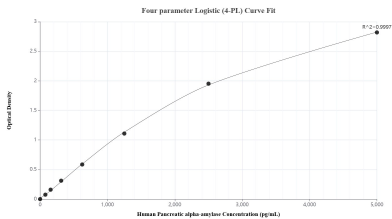
For technical support and original validation data for this product please contact:  
T: 1 (888) 4PTGLAB (1-888-478-4522) (toll free in USA), or 1(312) 455-8498 (outside USA)  
E: [proteintech@ptglab.com](mailto:proteintech@ptglab.com)  
W: [ptglab.com](http://ptglab.com)

This product is exclusively available under Proteintech Group brand and is not available to purchase from any other manufacturer.

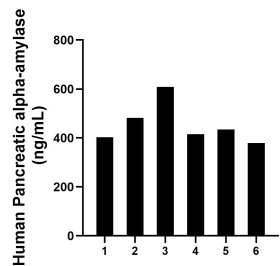
## Selected Validation Data



human saliva were subjected to SDS PAGE followed by western blot with 86243-1-RR (AMY2A antibody) at dilution of 1:10000 incubated at room temperature for 1.5 hours. This data was developed using the same antibody clone with 86243-1-PBS in a different storage buffer formulation.



Sandwich ELISA standard curve of MP02585-1, Human Pancreatic alpha-amylase Recombinant Matched Antibody Pair - PBS only. 86243-1-PBS was coated to a plate as the capture antibody and incubated with serial dilutions of standard Eg3071. 86243-2-PBS was HRP conjugated as the detection antibody. Range: 78.1-5000 pg/mL



Serum of six individual healthy human donors was measured. The Pancreatic alpha-amylase concentration of detected samples was determined to be 453.6 ng/mL with a range of 379.0-609.0 ng/mL.