

For Research Use Only

Pancreatic alpha-amylase Recombinant antibody

Catalog Number: 86243-1-RR



Basic Information

Catalog Number:

86243-1-RR

Size:

100ul, Concentration: 1000 µg/ml by 279

Nanodrop;

Source:

Rabbit

Isotype:

IgG

Immunogen Catalog Number:

EG3071

GenBank Accession Number:

NM_000699.4

GeneID (NCBI):

279

UNIPROT ID:

P04746-1

Full Name:

amylase, alpha 2A (pancreatic)

Calculated MW:

58 kDa

Observed MW:

58-60 kDa

Purification Method:

Protein A purification

CloneNo.:

250679H5

Recommended Dilutions:

WB: 1:5000-1:50000

Applications

Tested Applications:

WB, ELISA

Species Specificity:

human

Positive Controls:

WB : human saliva,

Storage

Storage:

Store at -20°C. Stable for one year after shipment.

Storage Buffer:

PBS with 0.02% sodium azide and 50% glycerol, pH7.3

Aliquoting is unnecessary for -20°C storage

*** 20ul sizes contain 0.1% BSA

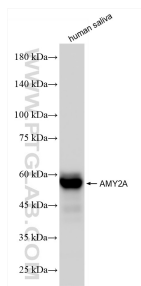
For technical support and original validation data for this product please contact:

T: 1 (888) 4PTGLAB (1-888-478-4522) (toll free in USA), or 1(312) 455-8498 (outside USA)

E: proteintech@ptglab.com
W: ptglab.com

This product is exclusively available under Proteintech Group brand and is not available to purchase from any other manufacturer.

Selected Validation Data



human saliva were subjected to SDS PAGE followed by western blot with 86243-1-RR (AMY2A antibody) at dilution of 1:10000 incubated at room temperature for 1.5 hours.