

For Research Use Only

CD36 Recombinant monoclonal antibody

Catalog Number:86246-6-RR



Basic Information

Catalog Number: 86246-6-RR	GenBank Accession Number: GeneID (NCBI): 29184	Purification Method: Protein A purification
Size: 100ul , Concentration: 1000 µg/ml by Nanodrop;	UNIPROT ID: Q07969	CloneNo.: 250237G3
Source: Rabbit	Full Name: CD36 molecule (thrombospondin receptor)	Recommended Dilutions: WB: 1:2000-1:10000 IHC: 1:500-1:2000 IF-P: 1:200-1:800
Isotype: IgG	Calculated MW: 53 kDa	
Immunogen Catalog Number: EG3222	Observed MW: 88 kDa	

Applications

Tested Applications:

WB, IHC, IF-P, ELISA

Species Specificity:

mouse, rat

Note-IHC: suggested antigen retrieval with TE buffer pH 9.0; (*) Alternatively, antigen retrieval may be performed with citrate buffer pH 6.0

Positive Controls:

WB : rat heart tissue, mouse heart tissue, rat adipose tissue, mouse adipose tissue, rat spleen tissue

IHC : rat spleen tissue,

IF-P : rat liver tissue,

Background Information

CD36, also named as GP3B and GP4, is a membrane glycoprotein present on platelets, monocytes, erythroid precursors, endothelial cells, and several tumor cell lines. CD36 binds to collagen, thrombospondin, anionic phospholipids, long chain fatty acids and may function in the transport and/or as a regulator of fatty acid transport and oxidized LDL. CD36 may function as a cell adhesion molecule. It mediates cytoadherence of Plasmodium falciparum parasitized erythrocytes.

Storage

Storage:

Store at -20°C. Stable for one year after shipment.

Storage Buffer:

PBS with 0.02% sodium azide and 50% glycerol, pH7.3

Aliquoting is unnecessary for -20°C storage

*** 20ul sizes contain 0.1% BSA

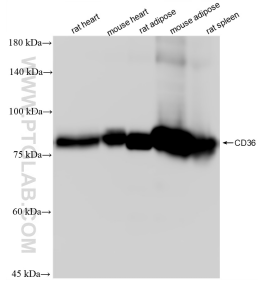
For technical support and original validation data for this product please contact:

T: 1 (888) 4PTGLAB (1-888-478-4522) (toll free in USA), or 1(312) 455-8498 (outside USA)

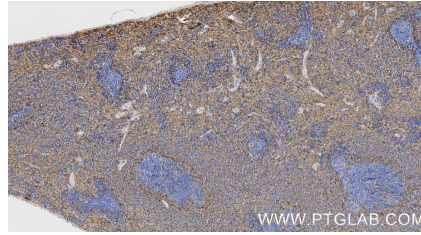
E: proteintech@ptglab.com
W: ptglab.com

This product is exclusively available under Proteintech Group brand and is not available to purchase from any other manufacturer.

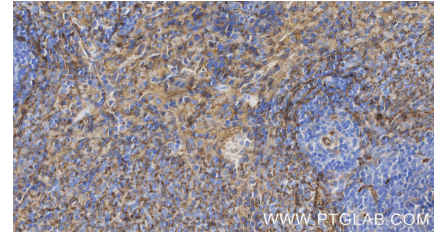
Selected Validation Data



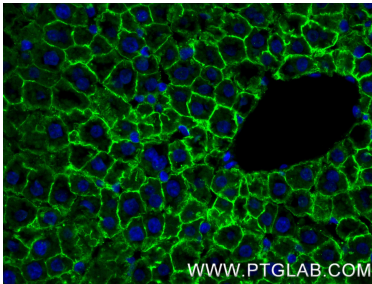
Various lysates were subjected to SDS PAGE followed by western blot with 86246-6-RR (CD36/SR-B3 antibody) at dilution of 1:5000 incubated at room temperature for 1.5 hours.



Immunohistochemical analysis of paraffin-embedded rat spleen tissue slide using 86246-6-RR (CD36 antibody) at dilution of 1:1000 (under 10x lens). Heat mediated antigen retrieval with Tris-EDTA buffer (pH 9.0).



Immunohistochemical analysis of paraffin-embedded rat spleen tissue slide using 86246-6-RR (CD36 antibody) at dilution of 1:1000 (under 40x lens). Heat mediated antigen retrieval with Tris-EDTA buffer (pH 9.0).



Immunofluorescent analysis of (4% PFA) fixed paraffin-embedded rat liver tissue using CD36 antibody (86246-6-RR, Clone: 250237G3) at dilution of 1:400 and CoralLite® 488-Conjugated Goat Anti-Rabbit IgG(H+L) (SA00013-2). Heat mediated antigen retrieval with Tris-EDTA buffer (pH 9.0).