

For Research Use Only

# CKAP2L Recombinant antibody, PBS Only

Catalog Number: 86247-1-PBS



## Basic Information

<b>Catalog Number:</b> 86247-1-PBS	<b>GenBank Accession Number:</b> BC036217	<b>Purification Method:</b> Protein A purification
<b>Size:</b> 100ug , Concentration: 1 mg/ml by Nanodrop;	<b>GeneID (NCBI):</b> 150468	<b>CloneNo.:</b> 250860G10
<b>Source:</b> Rabbit	<b>UNIPROT ID:</b> Q8IYA6	
<b>Isotype:</b> IgG	<b>Full Name:</b> cytoskeleton associated protein 2-like	
<b>Immunogen Catalog Number:</b> AG10909	<b>Calculated MW:</b> 745 aa, 84 kDa	
	<b>Observed MW:</b> 84 kDa	

## Applications

**Tested Applications:**  
WB, IF/ICC, IP, Indirect ELISA

**Species Specificity:**  
human

## Background Information

CKAP2L is a microtubule-binding protein that is crucial for the formation of the mitotic spindle and the cell cycle progression of neural progenitor cells. Mutations in CKAP2L have been associated with spindle organization defects, including mitotic spindle defects, lagging chromosomes, and chromatin bridges. There is evidence that mutations in this gene are associated with Filippi syndrome, characterized by growth defects, microcephaly, intellectual disability, facial feature defects, and syndactyly(PMID: 25439729).

## Storage

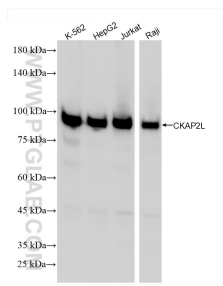
**Storage:**  
Store at -80°C.

**Storage Buffer:**  
PBS only, pH7.3

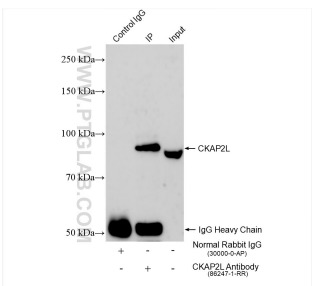
For technical support and original validation data for this product please contact:  
T: 1 (888) 4PTGLAB (1-888-478-4522) (toll free in USA), or 1(312) 455-8498 (outside USA)  
E: [proteintech@ptglab.com](mailto:proteintech@ptglab.com)  
W: [ptglab.com](http://ptglab.com)

This product is exclusively available under Proteintech Group brand and is not available to purchase from any other manufacturer.

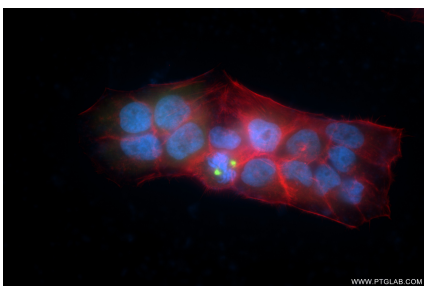
## Selected Validation Data



Various lysates were subjected to SDS PAGE followed by western blot with 86247-1-RR (CKAP2L antibody) at dilution of 1:2000 incubated at room temperature for 1.5 hours. This data was developed using the same antibody clone with 86247-1-PBS in a different storage buffer formulation.



IP result of anti-CKAP2L (IP:86247-1-RR, 4ug; Detection:86247-1-RR 1:1000) with Jurkat cells lysate 1360 ug. This data was developed using the same antibody clone with 86247-1-PBS in a different storage buffer formulation.



Immunofluorescent analysis of (4% PFA) fixed HepG2 cells using CKAP2L antibody (86247-1-RR, Clone: 250860G10 ) at dilution of 1:800 and CoraLite®488-Conjugated Goat Anti-Rabbit IgG(H+L) (SA00013-2), CL594-Phalloidin (red). This data was developed using the same antibody clone with 86247-1-PBS in a different storage buffer formulation.