

For Research Use Only

CKAP2L Recombinant antibody

Catalog Number: 86247-1-RR



Basic Information

Catalog Number:

86247-1-RR

Size:

100ul, Concentration: 1000 µg/ml by
Nanodrop;

Source:

Rabbit

Isotype:

IgG

Immunogen Catalog Number:

AG10909

GenBank Accession Number:

BC036217

GeneID (NCBI):

150468

UNIPROT ID:

Q8IYA6

Full Name:

cytoskeleton associated protein 2-
like

Calculated MW:

745 aa, 84 kDa

Observed MW:

84 kDa

Purification Method:

Protein A purification

CloneNo.:

250860G10

Recommended Dilutions:

WB: 1:1000-1:4000

IP: 0.5-4.0 µg for 1.0-3.0 mg of total
protein lysate

IF/ICC: 1:400-1:1600

Applications

Tested Applications:

WB, IF/ICC, IP, ELISA

Species Specificity:

human

Positive Controls:

WB : K-562 cells, HepG2 cells, Jurkat cells, Raji cells

IP : Jurkat cells,

IF/ICC : HepG2 cells,

Background Information

CKAP2L is a microtubule-binding protein that is crucial for the formation of the mitotic spindle and the cell cycle progression of neural progenitor cells. Mutations in CKAP2L have been associated with spindle organization defects, including mitotic spindle defects, lagging chromosomes, and chromatin bridges. There is evidence that mutations in this gene are associated with Filippi syndrome, characterized by growth defects, microcephaly, intellectual disability, facial feature defects, and syndactyly (PMID: 25439729).

Storage

Storage:

Store at -20°C. Stable for one year after shipment.

Storage Buffer:

PBS with 0.02% sodium azide and 50% glycerol, pH7.3

Aliquoting is unnecessary for -20°C storage

*** 20ul sizes contain 0.1% BSA

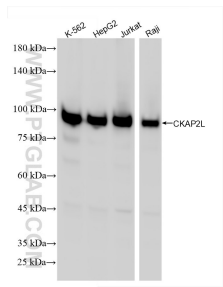
For technical support and original validation data for this product please contact:

T: 1 (888) 4PTGLAB (1-888-478-4522) (toll free
in USA), or 1(312) 455-8498 (outside USA)

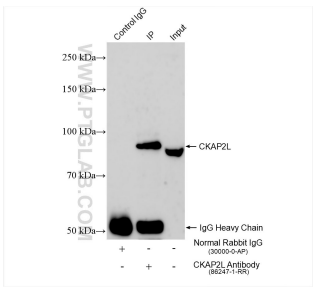
E: proteintech@ptglab.com
W: ptglab.com

This product is exclusively available under Proteintech Group brand and is not available to purchase from any other manufacturer.

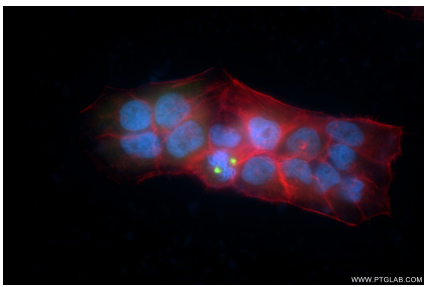
Selected Validation Data



Various lysates were subjected to SDS PAGE followed by western blot with 86247-1-RR (CKAP2L antibody) at dilution of 1:2000 incubated at room temperature for 1.5 hours.



IP result of anti-CKAP2L (IP:86247-1-RR, 4ug; Detection:86247-1-RR 1:1000) with Jurkat cells lysate 1360 ug.



Immunofluorescent analysis of (4% PFA) fixed HepG2 cells using CKAP2L antibody (86247-1-RR, Clone: 250860G10) at dilution of 1:800 and CoraLite®488-Conjugated Goat Anti-Rabbit IgG(H+L) (SA00013-2), CL594-Phalloidin (red).