

For Research Use Only

FKBP1A Recombinant monoclonal antibody, PBS Only (Capture)

Catalog Number: 86249-1-PBS



Basic Information

Catalog Number: 86249-1-PBS	GenBank Accession Number: BC001925	Purification Method: Protein A purification
Size: 100ug, Concentration: 1 mg/ml by Nanodrop;	GeneID (NCBI): 2280	CloneNo.: 250923G12
Source: Rabbit	UNIPROT ID: P62942	
Isotype: IgG	Full Name: FK506 binding protein 1A, 12kDa	
Immunogen Catalog Number: AG0406	Calculated MW: 12 kDa	
	Observed MW: 15 kDa	

Applications

Tested Applications:
WB, Sandwich ELISA, Indirect ELISA

Species Specificity:
human, mouse, rat

Product Information

86249-1-PBS targets FKBP1A as part of a matched antibody pair:

MP02313-2: 86249-1-PBS capture and 86249-4-PBS detection (validated in Sandwich ELISA)

Unconjugated rabbit recombinant monoclonal antibody in PBS only (BSA and azide free) storage buffer at a concentration of 1 mg/mL, ready for conjugation. Created using Proteintech's proprietary in-house recombinant technology. Recombinant production enables unrivalled batch-to-batch consistency, easy scale-up, and future security of supply.

This conjugation ready format makes antibodies ideal for use in many applications including: ELISAs, multiplex assays requiring matched pairs, mass cytometry, and multiplex imaging applications. Antibody use should be optimized by the end user for each application and assay.

Background Information

FKBP1A (FK506-binding protein 1A) is also named as FKBP1, FKBP12 and belongs to the FKBP-type PPIase family. It keeps in an inactive conformation TGFBR1, the TGF-beta type I serine/threonine kinase receptor, preventing TGF-beta receptor activation in absence of ligand and catalyzes the cis-trans isomerization of proline imidic peptide bonds in oligopeptides.

Storage

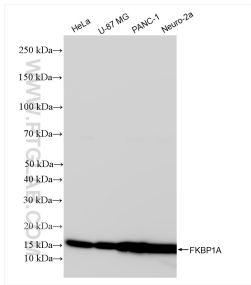
Storage:
Store at -80°C.

Storage Buffer:
PBS only, pH7.3

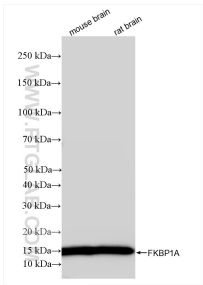
For technical support and original validation data for this product please contact:
T: 1 (888) 4PTGLAB (1-888-478-4522) (toll free in USA), or 1(312) 455-8498 (outside USA)
E: proteintech@ptglab.com
W: ptglab.com

This product is exclusively available under Proteintech Group brand and is not available to purchase from any other manufacturer.

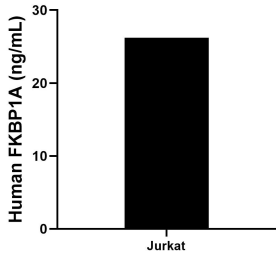
Selected Validation Data



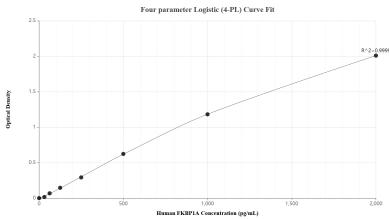
Various lysates were subjected to SDS PAGE followed by western blot with 86249-1-RR (FKBP1A antibody) at dilution of 1:20000 incubated at room temperature for 1.5 hours. This data was developed using the same antibody clone with 86249-1-PBS in a different storage buffer formulation.



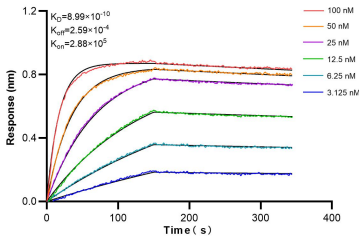
Various lysates were subjected to SDS PAGE followed by western blot with 86249-1-RR (FKBP1A antibody) at dilution of 1:20000 incubated at room temperature for 1.5 hours. This data was developed using the same antibody clone with 86249-1-PBS in a different storage buffer formulation.



The mean FKBP1A concentration was determined to be 26.2 ng/mL in Jurkat cell extract based on a 1.2 mg/mL extract load.



Sandwich ELISA standard curve of MP02313-2, Human FKBP1A Recombinant Matched Antibody Pair - PBS only. 86249-1-PBS was coated to a plate as the capture antibody and incubated with serial dilutions of standard Ag0406. 86249-4-PBS was HRP conjugated as the detection antibody. Range: 31.3-2000 pg/mL.



Biolayer interferometry (BLI) kinetic assays of 86249-1-RR against Human FKBP1A were performed. The affinity constant is 0.899 nM.