

For Research Use Only

# Cytokeratin 19 Recombinant antibody, PBS Only

Catalog Number: 86250-1-PBS



## Basic Information

### Catalog Number:

86250-1-PBS

### Size:

100ug , Concentration: 1 mg/ml by  
Nanodrop;

### Source:

Rabbit

### Isotype:

IgG

### GenBank Accession Number:

BC002539

### GeneID (NCBI):

3880

### UNIPROT ID:

P08727

### Full Name:

keratin 19

### Calculated MW:

44 kDa

### Observed MW:

44 kDa

### Purification Method:

Protein A purification

### CloneNo.:

250894B1

## Applications

### Tested Applications:

WB, IHC, IF/ICC, Indirect ELISA

### Species Specificity:

human

## Background Information

Cytokeratin 19 (CK19 or KRT19) is a type I (acidic) cytokeratin. It is an intermediate filament protein providing structural rigidity and multipurpose scaffolds in epithelial cells. CK19 is often overexpressed in various cancers (e.g., hepatocellular carcinoma [HCC], pancreatic adenocarcinoma, lung cancer) and serves as a biomarker for hepatic progenitor cells (HPCs) associated with poor prognosis in HCC patients. Additionally, CK19 expression is common in pancreatic and gastrointestinal adenocarcinomas and has been studied as a potential diagnostic and prognostic marker for pancreatic neuroendocrine tumors (PNETs), where positive CK19 expression correlates with poor prognosis. Serum CK19 fragments (e.g., CYFRA 21-1, CK19-2G2) have been investigated as tumor markers for lung and breast cancer, with preoperative levels associated with metastasis and survival.

## Storage

### Storage:

Store at -80°C.

### Storage Buffer:

PBS only, pH7.3

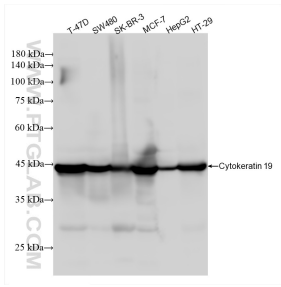
For technical support and original validation data for this product please contact:

T: 1 (888) 4PTGLAB (1-888-478-4522) (toll free  
in USA), or 1(312) 455-8498 (outside USA)

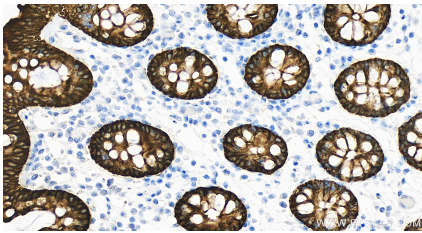
E: [proteintech@ptglab.com](mailto:proteintech@ptglab.com)  
W: [ptglab.com](http://ptglab.com)

This product is exclusively available under Proteintech Group brand and is not available to purchase from any other manufacturer.

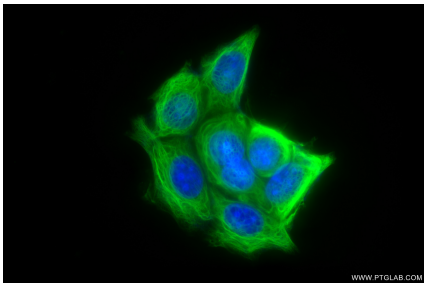
## Selected Validation Data



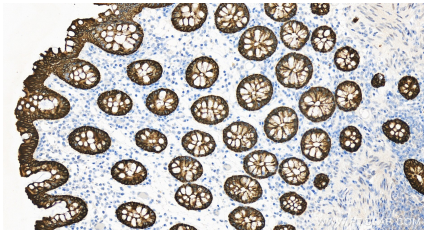
Various lysates were subjected to SDS PAGE followed by western blot with 86250-1-RR (Cytokeratin 19 antibody) at dilution of 1:10000 incubated at room temperature for 1.5 hours. This data was developed using the same antibody clone with 86250-1-PBS in a different storage buffer formulation.



Immunohistochemical analysis of paraffin-embedded human colon tissue slide using 86250-1-RR (Cytokeratin 19 antibody) at dilution of 1:2000 (under 20x lens). Heat mediated antigen retrieval with Tris-EDTA buffer (pH 9.0). This data was developed using the same antibody clone with 86250-1-PBS in a different storage buffer formulation.



Immunofluorescent analysis of (-20°C Methanol) fixed MCF-7 cells using Cytokeratin 19 antibody (86250-1-RR, Clone: 250894B1 ) at dilution of 1:2000 and CoraLite®488-Conjugated Goat Anti-Rabbit IgG(H+L) (SA00013-2). This data was developed using the same antibody clone with 86250-1-PBS in a different storage buffer formulation.



Immunohistochemical analysis of paraffin-embedded human colon tissue slide using 86250-1-RR (Cytokeratin 19 antibody) at dilution of 1:2000 (under 20x lens). Heat mediated antigen retrieval with Tris-EDTA buffer (pH 9.0). This data was developed using the same antibody clone with 86250-1-PBS in a different storage buffer formulation.