

For Research Use Only

SASS6 Recombinant antibody, PBS Only

Catalog Number: 86251-1-PBS



Basic Information

Catalog Number:

86251-1-PBS

Size:

100ug , Concentration: 1 mg/ml by
Nanodrop;

Source:

Rabbit

Isotype:

IgG

Immunogen Catalog Number:

AG15917

GenBank Accession Number:

BC101026

GeneID (NCBI):

163786

UNIPROT ID:

Q6UVJ0

Full Name:

spindle assembly 6 homolog (C.
elegans)

Calculated MW:

657 aa, 74 kDa

Observed MW:

75 kDa

Purification Method:

Protein A purification

CloneNo.:

250872C5

Applications

Tested Applications:

WB, Indirect ELISA

Species Specificity:

human, rat

Background Information

Spindle assembly abnormal protein 6 homolog (SASS6) is a centrosomal protein that, together with PLK4, CEP135, CENPJ (also known as CPAP) and STIL, is involved in regulating the number of centrosomes in human cells.

Storage

Storage:

Store at -80°C.

Storage Buffer:

PBS only, pH7.3

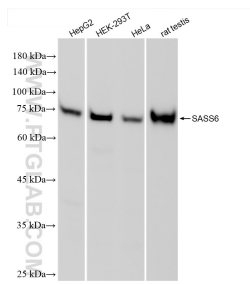
For technical support and original validation data for this product please contact:

T: 1 (888) 4PTGLAB (1-888-478-4522) (toll free
in USA), or 1(312) 455-8498 (outside USA)

E: proteintech@ptglab.com
W: ptglab.com

This product is exclusively available under Proteintech Group brand and is not available to purchase from any other manufacturer.

Selected Validation Data



Various lysates were subjected to SDS PAGE followed by western blot with 86251-1-RR (SASS6 antibody) at dilution of 1:4000 incubated at room temperature for 1.5 hours. This data was developed using the same antibody clone with 86251-1-PBS in a different storage buffer formulation.