

For Research Use Only

SASS6 Recombinant antibody

Catalog Number: 86251-1-RR



Basic Information

Catalog Number:

86251-1-RR

Size:

100ul , Concentration: 1000 µg/ml by
Nanodrop;

Source:

Rabbit

Isotype:

IgG

Immunogen Catalog Number:

AG15917

GenBank Accession Number:

BC101026

GeneID (NCBI):

163786

UNIPROT ID:

Q6UVJ0

Full Name:

spindle assembly 6 homolog (C.
elegans)

Calculated MW:

657 aa, 74 kDa

Observed MW:

75 kDa

Purification Method:

Protein A purification

CloneNo.:

250872C5

Recommended Dilutions:

WB: 1:1000-1:8000

Applications

Tested Applications:

WB, ELISA

Species Specificity:

human, rat

Positive Controls:

WB : HepG2 cells, HEK-293T cells, HeLa cells, rat testis
tissue

Background Information

Spindle assembly abnormal protein 6 homolog (SASS6) is a centrosomal protein that, together with PLK4, CEP135, CENPJ (also known as CPAP) and STIL, is involved in regulating the number of centrosomes in human cells.

Storage

Storage:

Store at -20°C. Stable for one year after shipment.

Storage Buffer:

PBS with 0.02% sodium azide and 50% glycerol, pH7.3

Aliquoting is unnecessary for -20°C storage

*** 20ul sizes contain 0.1% BSA

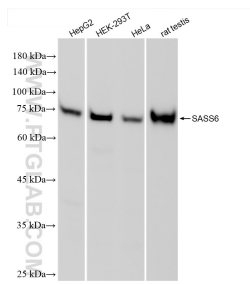
For technical support and original validation data for this product please contact:

T: 1 (888) 4PTGLAB (1-888-478-4522) (toll free
in USA), or 1(312) 455-8498 (outside USA)

E: proteintech@ptglab.com
W: ptglab.com

This product is exclusively available under Proteintech
Group brand and is not available to purchase from any
other manufacturer.

Selected Validation Data



Various lysates were subjected to SDS PAGE followed by western blot with 86251-1-RR (SASS6 antibody) at dilution of 1:4000 incubated at room temperature for 1.5 hours.