

For Research Use Only

Rat CD86 Recombinant antibody, PBS Only (Detector)

Catalog Number: 86252-1-PBS



Basic Information

Catalog Number: 86252-1-PBS	GenBank Accession Number: NM_020081.1	Purification Method: Protein A purification
Size: 100ug , Concentration: 1 mg/ml by Nanodrop;	GeneID (NCBI): 56822	CloneNo.: 250726D3
Source: Rabbit	UNIPROT ID: O35531	
Isotype: IgG	Full Name: CD86 molecule	
Immunogen Catalog Number: EG3586	Calculated MW: 36 kDa	

Applications

Tested Applications:
WB, Cytometric bead array, Indirect ELISA, Sample test

Species Specificity:
rat

Product Information

86252-1-PBS targets CD86 as part of a matched antibody pair:

MP02379-1: 86252-2-PBS capture and 86252-1-PBS detection (validated in Cytometric bead array)

Unconjugated rabbit recombinant monoclonal antibody in PBS only (BSA and azide free) storage buffer at a concentration of 1 mg/mL, ready for conjugation. Created using Proteintech's proprietary in-house recombinant technology. Recombinant production enables unrivalled batch-to-batch consistency, easy scale-up, and future security of supply.

This conjugation ready format makes antibodies ideal for use in many applications including: ELISAs, multiplex assays requiring matched pairs, mass cytometry, and multiplex imaging applications. Antibody use should be optimized by the end user for each application and assay.

Background Information

CD86 (also known as B7-2) is a costimulatory molecule belonging to the immunoglobulin superfamily. Primarily expressed on antigen-presenting cells (APCs), including B cells, dendritic cells, and macrophages, CD86 is the ligand for two proteins at the cell surface of T cells, CD28 antigen and CTLA-4. Binding of CD86 with CD28 antigen is a costimulatory signal for activation of the T-cell. Binding of CD86 with CTLA-4 negatively regulates T-cell activation and diminishes the immune response. (PMID: 7513726; 1847722; 11029388; 27591335)

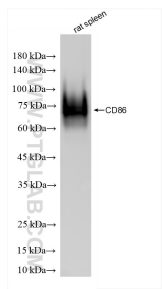
Storage

Storage:
Store at -80°C.
Storage Buffer:
PBS only, pH7.3

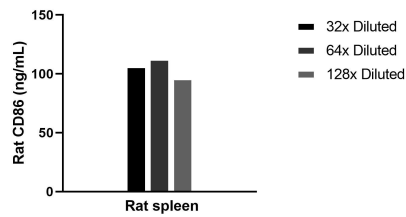
For technical support and original validation data for this product please contact:
T: 1 (888) 4PTGLAB (1-888-478-4522) (toll free in USA), or 1(312) 455-8498 (outside USA)
E: proteintech@ptglab.com
W: ptglab.com

This product is exclusively available under Proteintech Group brand and is not available to purchase from any other manufacturer.

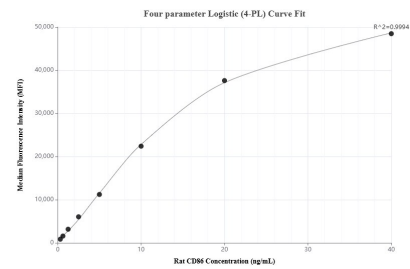
Selected Validation Data



rat spleen tissue was subjected to SDS PAGE followed by western blot with 86252-1-RR (CD86 antibody) at dilution of 1:10000 incubated at room temperature for 1.5 hours. This data was developed using the same antibody clone with 86252-1-PBS in a different storage buffer formulation.



The mean CD86 concentration was determined to be 105.1 ng/mL in Rat spleen tissue extract based on a 8.8 mg/mL extract load.



Cytometric bead array standard curve of MP02379-1, RAT CD86 Recombinant Matched Antibody Pair, PBS Only. Capture antibody: 86252-2-PBS. Detection antibody: 86252-1-PBS. Standard: Eg3586. Range: 0.312-40 ng/mL.