

For Research Use Only

RPS3A Recombinant antibody

Catalog Number: 86254-3-RR



Basic Information

Catalog Number:

86254-3-RR

Size:

100ul, Concentration: 1000 µg/ml by Nanodrop;

Source:

Rabbit

Isotype:

IgG

Immunogen Catalog Number:

AG5273

GenBank Accession Number:

BC066926

GeneID (NCBI):

6189

UNIPROT ID:

P61247

Full Name:

ribosomal protein S3A

Calculated MW:

30 kDa

Observed MW:

35 kDa

Purification Method:

Protein A purification

CloneNo.:

251033B11

Recommended Dilutions:

WB: 1:5000-1:50000

IF/ICC: 1:250-1:1000

Applications

Tested Applications:

WB, IF/ICC, ELISA

Species Specificity:

human, mouse, rat

Positive Controls:

WB : HeLa cells, HepG2 cells, Raji cells, A431 cells, HEK-293T cells, NIH/3T3 cells, PC-12 cells

IF/ICC : HepG2 cells,

Background Information

RPS3a, a component of the ribosomal small subunit (40S), is a member of the A20 family of the deubiquitinating cysteine proteases. RPS3a is an inducing factor for oncogenic cellular transformation of Rat-1 cells by v-fos, and is highly expressed in most tumors including hepatocellular carcinoma and other cancers. On the other hand, RPS3a has also been described as a regulator of apoptosis and transcription factors.

Storage

Storage:

Store at -20°C. Stable for one year after shipment.

Storage Buffer:

PBS with 0.02% sodium azide and 50% glycerol, pH7.3

Aliquoting is unnecessary for -20°C storage

*** 20ul sizes contain 0.1% BSA

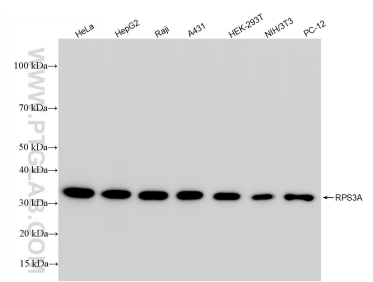
For technical support and original validation data for this product please contact:

T: 1 (888) 4PTGLAB (1-888-478-4522) (toll free in USA), or 1(312) 455-8498 (outside USA)

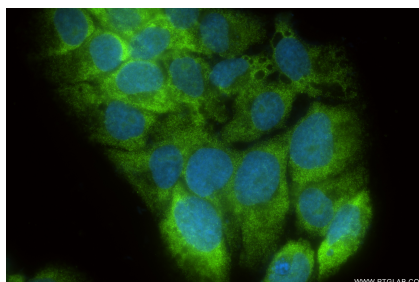
E: proteintech@ptglab.com
W: ptglab.com

This product is exclusively available under Proteintech Group brand and is not available to purchase from any other manufacturer.

Selected Validation Data



Various lysates were subjected to SDS PAGE followed by western blot with 86254-3-RR (RPS3A antibody) at dilution of 1:10000 incubated at room temperature for 1.5 hours.



Immunofluorescent analysis of (4% PFA) fixed HepG2 cells using RPS3A antibody (86254-3-RR, Clone: 251033B11) at dilution of 1:500 and CoraLite® 488-Conjugated Goat Anti-Rabbit IgG(H+L) (SA00013-2).