

For Research Use Only

# SNRPA Recombinant antibody, PBS Only (Detector)

Catalog Number: 86259-1-PBS



## Basic Information

<b>Catalog Number:</b> 86259-1-PBS	<b>GenBank Accession Number:</b> BC000405	<b>Purification Method:</b> Protein A purification
<b>Size:</b> 100ug , Concentration: 1 mg/ml by Nanodrop;	<b>GeneID (NCBI):</b> 6626	<b>CloneNo.:</b> 251055G7
<b>Source:</b> Rabbit	<b>UNIPROT ID:</b> P09012	
<b>Isotype:</b> IgG	<b>Full Name:</b> small nuclear ribonucleoprotein polypeptide A	
<b>Immunogen Catalog Number:</b> AG0283	<b>Calculated MW:</b> 31 kDa	

## Applications

**Tested Applications:**  
Cytometric bead array, Indirect ELISA, Sample test

**Species Specificity:**  
human

## Product Information

86259-1-PBS targets SNRPA as part of a matched antibody pair:

MP02344-1: 86259-2-PBS capture and 86259-1-PBS detection (validated in Cytometric bead array)

Unconjugated rabbit recombinant monoclonal antibody in PBS only (BSA and azide free) storage buffer at a concentration of 1 mg/mL, ready for conjugation. Created using Proteintech's proprietary in-house recombinant technology. Recombinant production enables unrivalled batch-to-batch consistency, easy scale-up, and future security of supply.

This conjugation ready format makes antibodies ideal for use in many applications including: ELISAs, multiplex assays requiring matched pairs, mass cytometry, and multiplex imaging applications. Antibody use should be optimized by the end user for each application and assay.

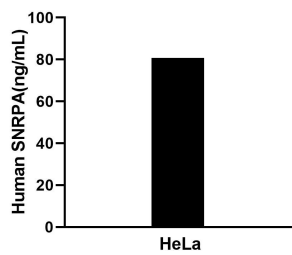
## Storage

**Storage:**  
Store at -80°C.  
**Storage Buffer:**  
PBS only, pH7.3

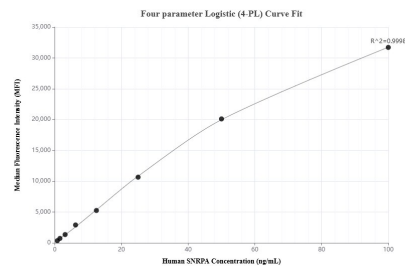
For technical support and original validation data for this product please contact:  
T: 1 (888) 4PTGLAB (1-888-478-4522) (toll free in USA), or 1(312) 455-8498 (outside USA)  
E: proteintech@ptglab.com  
W: ptglab.com

This product is exclusively available under Proteintech Group brand and is not available to purchase from any other manufacturer.

## Selected Validation Data



The mean SNRPA concentration was determined to be 81.7 ng/mL in Hela cell extract based on a 0.5 mg/mL extract load.



Cytometric bead array standard curve of MP02344-1, SNRPA Recombinant Matched Antibody Pair, PBS Only. Capture antibody: 86259-2-PBS. Detection antibody: 86259-1-PBS. Standard: Ag0283. Range: 0.781-100 ng/mL