

For Research Use Only

Mouse Armetl1 Recombinant antibody, PBS Only (Detector)

Catalog Number: 86264-1-PBS



Basic Information

Catalog Number: 86264-1-PBS	GenBank Accession Number: NM_177647.4	Purification Method: Protein A purification
Size: 100ug , Concentration: 1 mg/ml by Nanodrop;	GeneID (NCBI): 227526	CloneNo.: 250599B3
Source: Rabbit	UNIPROT ID: Q8CC36	
Isotype: IgG	Full Name: arginine-rich, mutated in early stage tumors-like 1	
Immunogen Catalog Number: EG2845	Calculated MW: 21 kDa	
	Observed MW: 16-21 kDa	

Applications

Tested Applications:
WB, Sandwich ELISA, Indirect ELISA, Sample test

Species Specificity:
mouse

Product Information

86264-1-PBS targets Armetl1 as part of a matched antibody pair:

MP02479-1: 86264-2-PBS capture and 86264-1-PBS detection (validated in Sandwich ELISA)

Unconjugated rabbit recombinant monoclonal antibody in PBS only (BSA and azide free) storage buffer at a concentration of 1 mg/mL, ready for conjugation. Created using Proteintech's proprietary in-house recombinant technology. Recombinant production enables unrivalled batch-to-batch consistency, easy scale-up, and future security of supply.

This conjugation ready format makes antibodies ideal for use in many applications including: ELISAs, multiplex assays requiring matched pairs, mass cytometry, and multiplex imaging applications. Antibody use should be optimized by the end user for each application and assay.

Storage

Storage:
Store at -80°C.

Storage Buffer:
PBS only, pH7.3

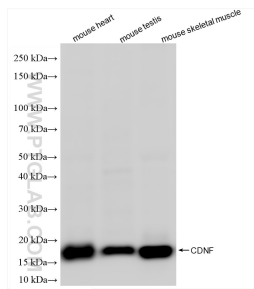
For technical support and original validation data for this product please contact:

T: 1 (888) 4PTGLAB (1-888-478-4522) (toll free in USA), or 1(312) 455-8498 (outside USA)

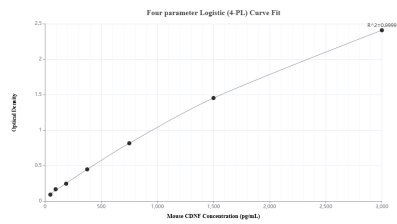
E: proteintech@ptglab.com
W: ptglab.com

This product is exclusively available under Proteintech Group brand and is not available to purchase from any other manufacturer.

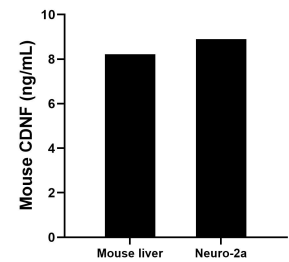
Selected Validation Data



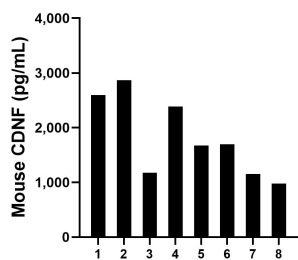
Various lysates were subjected to SDS PAGE followed by western blot with 86264-1-RR (Armetl1 antibody) at dilution of 1:2000 incubated at room temperature for 1.5 hours. This data was developed using the same antibody clone with 86264-1-PBS in a different storage buffer formulation.



Sandwich ELISA standard curve of MP02479-1, Mouse CDNF Recombinant Matched Antibody Pair - PBS only. 86264-2-PBS was coated to a plate as the capture antibody and incubated with serial dilutions of standard Eg2845. 86264-1-PBS was HRP conjugated as the detection antibody. Range: 46.9-3000 pg/mL



The mean CDNF concentration was determined to be 9.22 ng/mL in mouse liver tissue extract based on a 8.4 mg/mL extract load and 8.90 ng/mL in Neuro-2a cell extract based on a 1.6 mg/mL extract load.



Serum of eight mice was measured. The mouse CDNF concentration of detected samples was determined to be 1,814.8 pg/mL with a range of 975.9 - 2,868.5 pg/mL.