

For Research Use Only

C19orf59 Recombinant antibody

Catalog Number: 86266-1-RR



Basic Information

Catalog Number: 86266-1-RR	GenBank Accession Number: BC104798	Purification Method: Protein A purification
Size: 100ul , Concentration: 1000 µg/ml by Nanodrop;	GeneID (NCBI): 199675	CloneNo.: 250141G2
Source: Rabbit	UNIPROT ID: Q8IX19	Recommended Dilutions: WB: 1:1000-1:6000 IF/ICC: 1:250-1:1000
Isotype: IgG	Full Name: chromosome 19 open reading frame 59	
Immunogen Catalog Number: AG22616	Observed MW: 22/24 kDa	

Applications

Tested Applications: WB, IF/ICC, ELISA	Positive Controls:
Species Specificity: human	WB : THP-1 cells, IF/ICC : THP-1 cells,

Background Information

The MCEMP1 gene contains seven exons and was mapped to human chromosome 19p13.3. The epitope-tagged MCEMP1 has been expressed in mammalian cells and found to be localized to the cellular membrane with its C-terminus extending to the outside of the membrane and N-terminus into the cytoplasmic compartment. An evidently increased expression of mast cell expression membrane protein 1 (MCEMP1) has been observed in stroke patients and its expression independently improved the discrimination of 1-month outcome, suggesting the functionality of peripheral blood expression of MCEMP1 as a biomarker for stroke prognosis . (PMID: 30883005, PMID: 31104315, PMID: 15953541)

Storage

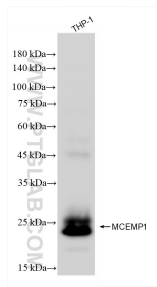
Storage:
Store at -20°C. Stable for one year after shipment.
Storage Buffer:
PBS with 0.02% sodium azide and 50% glycerol, pH7.3
Aliquoting is unnecessary for -20°C storage

*** 20ul sizes contain 0.1% BSA

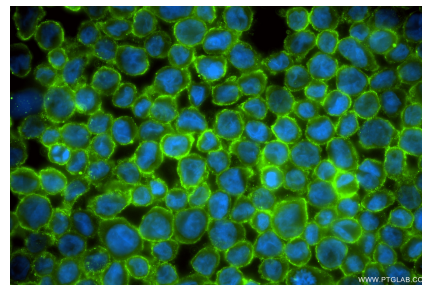
For technical support and original validation data for this product please contact:
T: 1 (888) 4PTGLAB (1-888-478-4522) (toll free in USA), or 1(312) 455-8498 (outside USA)
E: proteintech@ptglab.com
W: ptglab.com

This product is exclusively available under Proteintech Group brand and is not available to purchase from any other manufacturer.

Selected Validation Data



THP-1 cells were subjected to SDS PAGE followed by western blot with 86266-1-RR (C19orf59 antibody) at dilution of 1:3000 incubated at room temperature for 1.5 hours.



Immunofluorescent analysis of (4% PFA) fixed THP-1 cells using C19orf59 antibody (86266-1-RR, Clone: 250141G2) at dilution of 1:500 and CoraLite® 488-Conjugated Goat Anti-Rabbit IgG(H+L) (SA00013-2).