

For Research Use Only

KIF2A Recombinant antibody, PBS Only

Catalog Number: 86268-3-PBS



Basic Information

Catalog Number:

86268-3-PBS

Size:

100ug, Concentration: 1 mg/ml by Nanodrop;

Source:

Rabbit

Isotype:

IgG

Immunogen Catalog Number:

AG3748

GenBank Accession Number:

BC031828

GeneID (NCBI):

3796

UNIPROT ID:

O00139

Full Name:

kinesin heavy chain member 2A

Calculated MW:

679 aa, 77 kDa

Observed MW:

80-100 kDa

Purification Method:

Protein A purification

CloneNo.:

250946C7

Applications

Tested Applications:

WB, Indirect ELISA

Species Specificity:

human, mouse, rat

Background Information

Kinesin family member 2a (KIF2A), one of the kinesin family members, is identified in mammalian cells and involved in regulating microtubule dynamics during the mitosis via modulating intracellular transport, cell division, and bipolar spindle assembly (PMID: 17538014). High expression of KIF2A correlates with advanced tumor stages and worse prognosis in non-small cell lung cancer patients (PMID: 31858647). Within clinical practice, KIF2A exhibits key prognostic value for the management of gastric cancer, colorectal cancer and nasopharyngeal carcinoma (PMID: 32106376, PMID: 26070867, PMID: 26602436).

Storage

Storage:

Store at -80°C.

Storage Buffer:

PBS only, pH7.3

For technical support and original validation data for this product please contact:

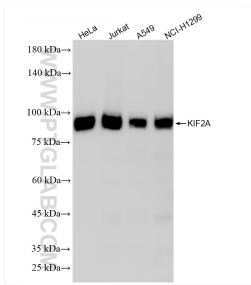
T: 1 (888) 4PTGLAB (1-888-478-4522) (toll free in USA), or 1(312) 455-8498 (outside USA)

E: proteintech@ptglab.com

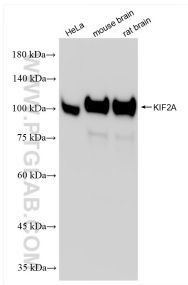
W: ptglab.com

This product is exclusively available under Proteintech Group brand and is not available to purchase from any other manufacturer.

Selected Validation Data



Various lysates were subjected to SDS PAGE followed by western blot with 86268-3-RR (KIF2A antibody) at dilution of 1:20000 incubated at room temperature for 1.5 hours. This data was developed using the same antibody clone with 86268-3-PBS in a different storage buffer formulation.



Various lysates were subjected to SDS PAGE followed by western blot with 86268-3-RR (KIF2A antibody) at dilution of 1:20000 incubated at room temperature for 1.5 hours. This data was developed using the same antibody clone with 86268-3-PBS in a different storage buffer formulation.