

For Research Use Only

KIF2A Recombinant antibody

Catalog Number: 86268-3-RR



Basic Information

Catalog Number: 86268-3-RR	GenBank Accession Number: BC031828	Purification Method: Protein A purification
Size: 100ul , Concentration: 1000 µg/ml by Nanodrop;	GeneID (NCBI): 3796	CloneNo.: 250946C7
Source: Rabbit	UNIPROT ID: O00139	Recommended Dilutions: WB: 1:5000-1:50000
Isotype: IgG	Full Name: kinesin heavy chain member 2A	
Immunogen Catalog Number: AG3748	Calculated MW: 679 aa, 77 kDa	
	Observed MW: 80-100 kDa	

Applications

Tested Applications: WB, ELISA	Positive Controls: WB : HeLa cells, Jurkat cells, A549 cells, NCI-H1299 cells, mouse brain tissue, rat brain tissue
Species Specificity: human, mouse, rat	

Background Information

Kinesin family member 2a (KIF2A), one of the kinesin family members, is identified in mammalian cells and involved in regulating microtubule dynamics during the mitosis via modulating intracellular transport, cell division, and bipolar spindle assembly (PMID: 17538014). High expression of KIF2A correlates with advanced tumor stages and worse prognosis in non-small cell lung cancer patients (PMID: 31858647). Within clinical practice, KIF2A exhibits key prognostic value for the management of gastric cancer, colorectal cancer and nasopharyngeal carcinoma (PMID: 32106376, PMID: 26070867, PMID: 26602436).

Storage

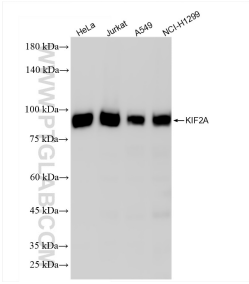
Storage:
Store at -20°C. Stable for one year after shipment.
Storage Buffer:
PBS with 0.02% sodium azide and 50% glycerol, pH7.3
Aliquoting is unnecessary for -20°C storage

*** 20ul sizes contain 0.1% BSA

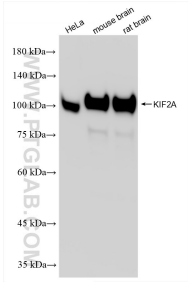
For technical support and original validation data for this product please contact:
T: 1 (888) 4PTGLAB (1-888-478-4522) (toll free in USA), or 1(312) 455-8498 (outside USA)
E: proteintech@ptglab.com
W: ptglab.com

This product is exclusively available under Proteintech Group brand and is not available to purchase from any other manufacturer.

Selected Validation Data



Various lysates were subjected to SDS PAGE followed by western blot with 86268-3-RR (KIF2A antibody) at dilution of 1:20000 incubated at room temperature for 1.5 hours.



Various lysates were subjected to SDS PAGE followed by western blot with 86268-3-RR (KIF2A antibody) at dilution of 1:20000 incubated at room temperature for 1.5 hours.