

For Research Use Only

LAMP2/ CD107b Recombinant antibody, PBS Only (Detector)

Catalog Number: 86269-1-PBS



Basic Information

Catalog Number: 86269-1-PBS	GenBank Accession Number: NM_002294.3	Purification Method: Protein A purification
Size: 100ug , Concentration: 1 mg/ml by Nanodrop;	GeneID (NCBI): 3920	CloneNo.: 250948C7
Source: Rabbit	ENSEMBL Gene ID: ENSG00000005893	
Isotype: IgG	UNIPROT ID: P13473-1	
Immunogen Catalog Number: EG4998	Full Name: lysosomal-associated membrane protein 2	
	Calculated MW: 45 kDa	

Applications

Tested Applications:
Cytometric bead array, Indirect ELISA, Sample test

Species Specificity:
human

Product Information

86269-1-PBS targets LAMP2/ CD107b as part of a matched antibody pair:

MP02321-1: 86269-2-PBS capture and 86269-1-PBS detection (validated in Cytometric bead array)

Unconjugated rabbit recombinant monoclonal antibody in PBS only (BSA and azide free) storage buffer at a concentration of 1 mg/mL, ready for conjugation. Created using Proteintech's proprietary in-house recombinant technology. Recombinant production enables unrivalled batch-to-batch consistency, easy scale-up, and future security of supply.

This conjugation ready format makes antibodies ideal for use in many applications including: ELISAs, multiplex assays requiring matched pairs, mass cytometry, and multiplex imaging applications. Antibody use should be optimized by the end user for each application and assay.

Storage

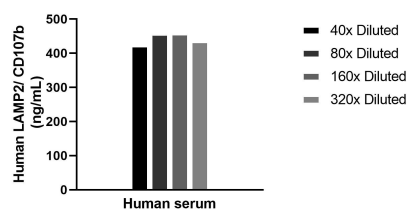
Storage:
Store at -80°C.

Storage Buffer:
PBS only, pH7.3

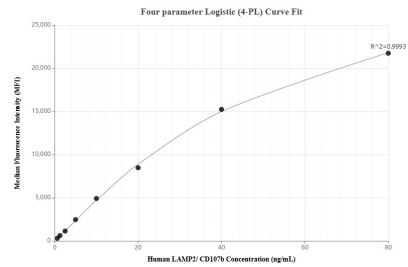
For technical support and original validation data for this product please contact:
T: 1 (888) 4PTGLAB (1-888-478-4522) (toll free in USA), or 1(312) 455-8498 (outside USA)
E: proteintech@ptglab.com
W: ptglab.com

This product is exclusively available under Proteintech Group brand and is not available to purchase from any other manufacturer.

Selected Validation Data



The mean LAMP2/ CD107b concentration was determined to be 442.5 ng/mL in human serum.



Cytometric bead array standard curve of MP02321-1, LAMP2/ CD107b Recombinant Matched Antibody Pair, PBS Only. Capture antibody: 86269-2-PBS. Detection antibody: 86269-1-PBS. Standard: Eg4998. Range: 0.625-80 ng/mL.