

For Research Use Only

LAMP2/ CD107b Recombinant monoclonal antibody, PBS Only (Detector)

Catalog Number: 86269-4-PBS



Basic Information

Catalog Number: 86269-4-PBS	GenBank Accession Number: NM_002294.3	Purification Method: Protein A purification
Size: 100ug , Concentration: 1 mg/ml by Nanodrop;	GeneID (NCBI): 3920	CloneNo.: 250948E6
Source: Rabbit	ENSEMBL Gene ID: ENSG00000005893	
Isotype: IgG	UNIPROT ID: P13473-1	
Immunogen Catalog Number: EG4998	Full Name: lysosomal-associated membrane protein 2	
	Calculated MW: 45 kDa	

Applications

Tested Applications:
Sandwich ELISA, Indirect ELISA, Sample test

Species Specificity:
human

Product Information

86269-4-PBS targets LAMP2/ CD107b as part of a matched antibody pair:

MP02321-2: 86269-5-PBS capture and 86269-4-PBS detection (validated in Sandwich ELISA)

Unconjugated rabbit recombinant monoclonal antibody in PBS only (BSA and azide free) storage buffer at a concentration of 1 mg/mL, ready for conjugation. Created using Proteintech's proprietary in-house recombinant technology. Recombinant production enables unrivalled batch-to-batch consistency, easy scale-up, and future security of supply.

This conjugation ready format makes antibodies ideal for use in many applications including: ELISAs, multiplex assays requiring matched pairs, mass cytometry, and multiplex imaging applications. Antibody use should be optimized by the end user for each application and assay.

Storage

Storage:
Store at -80°C.

Storage Buffer:
PBS only, pH7.3

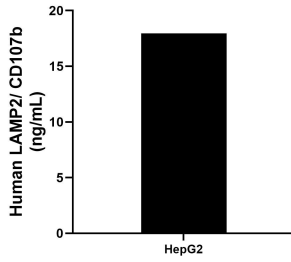
For technical support and original validation data for this product please contact:

T: 1 (888) 4PTGLAB (1-888-478-4522) (toll free in USA), or 1(312) 455-8498 (outside USA)

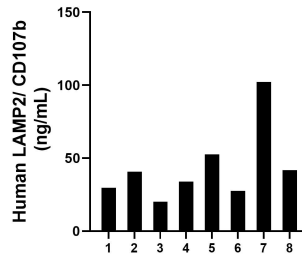
E: proteintech@ptglab.com
W: ptglab.com

This product is exclusively available under Proteintech Group brand and is not available to purchase from any other manufacturer.

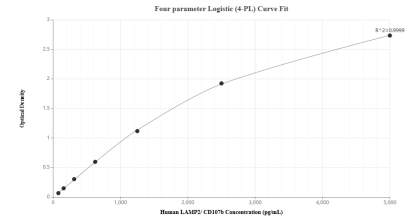
Selected Validation Data



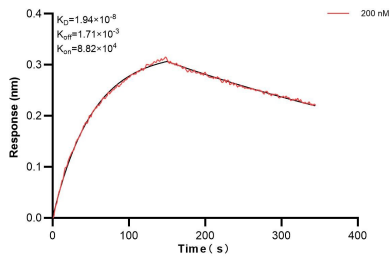
The mean LAMP2/ CD107b concentration was determined to be 17.96 ng/mL in HepG2 cell extract based on a 1.3 mg/mL extract load.



Plasma of eight individual healthy human donors was measured. The human LAMP2/ CD107b concentration of detected samples was determined to be 43.54 ng/mL with a range of 20.21 - 102.18 ng/mL.



Sandwich ELISA standard curve of MP02321-2, Human LAMP2/ CD107b Recombinant Matched Antibody Pair - PBS only. 86269-5-PBS was coated to a plate as the capture antibody and incubated with serial dilutions of standard Eg4998. 86269-4-PBS was HRP conjugated as the detection antibody. Range: 78.1-5000 pg/mL



Biolayer interferometry (BLI) kinetic assays of 86269-4-PBS against Human LAMP2/ CD107b were performed. The affinity constant is 19.4 nM.