

For Research Use Only

RPL7A Recombinant antibody, PBS Only (Capture)

Catalog Number: 86270-2-PBS



Basic Information

Catalog Number: 86270-2-PBS	GenBank Accession Number: BC005128	Purification Method: Protein A purification
Size: 100ug , Concentration: 1 mg/ml by Nanodrop;	GeneID (NCBI): 6130	CloneNo.: 250886D12
Source: Rabbit	UNIPROT ID: P62424	
Isotype: IgG	Full Name: ribosomal protein L7a	
Immunogen Catalog Number: AG7543	Calculated MW: 266 aa, 30 kDa	

Applications

Tested Applications:
Cytometric bead array, Indirect ELISA, Sample test

Species Specificity:
human

Product Information

86270-2-PBS targets RPL7A as part of a matched antibody pair:

MP02327-1: 86270-2-PBS capture and 86270-1-PBS detection (validated in Cytometric bead array)

Unconjugated rabbit recombinant monoclonal antibody in PBS only (BSA and azide free) storage buffer at a concentration of 1 mg/mL, ready for conjugation. Created using Proteintech's proprietary in-house recombinant technology. Recombinant production enables unrivalled batch-to-batch consistency, easy scale-up, and future security of supply.

This conjugation ready format makes antibodies ideal for use in many applications including: ELISAs, multiplex assays requiring matched pairs, mass cytometry, and multiplex imaging applications. Antibody use should be optimized by the end user for each application and assay.

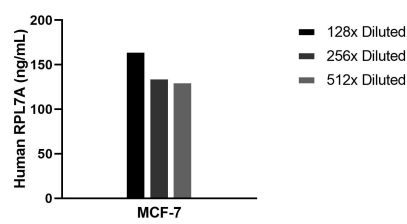
Storage

Storage:
Store at -80°C.
Storage Buffer:
PBS only, pH7.3

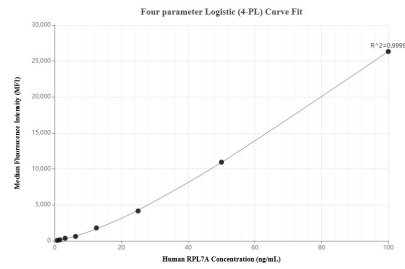
For technical support and original validation data for this product please contact:
T: 1 (888) 4PTGLAB (1-888-478-4522) (toll free in USA), or 1(312) 455-8498 (outside USA)
E: proteintech@ptglab.com
W: ptglab.com

This product is exclusively available under Proteintech Group brand and is not available to purchase from any other manufacturer.

Selected Validation Data



The mean RPL7A concentration was determined to be 144.1 ng/mL in MCF-7 cell extract based on a 1.2 mg/mL extract load.



Cytometric bead array standard curve of MP02327-1, RPL7A Recombinant Matched Antibody Pair, PBS Only. Capture antibody: 86270-2-PBS. Detection antibody: 86270-1-PBS. Standard: Ag7543. Range: 0.781-100 ng/mL.